

the Louise

1265
sq.ft.



3 bedrooms



2.5 bathrooms



23' wide



WATERFORD TOWNHOME STANDARD FEATURES

- ✓ No condo fees
- ✓ Fully landscaped
- ✓ Hardwood main floor
- ✓ Quartz countertops
- ✓ Wrought iron railings
- ✓ Full size, undeveloped basement
- ✓ Detached double car garage
- ✓ Upscale kitchen cabinets
- ✓ Stainless steel appliances
- ✓ 9' high ceiling to main floor

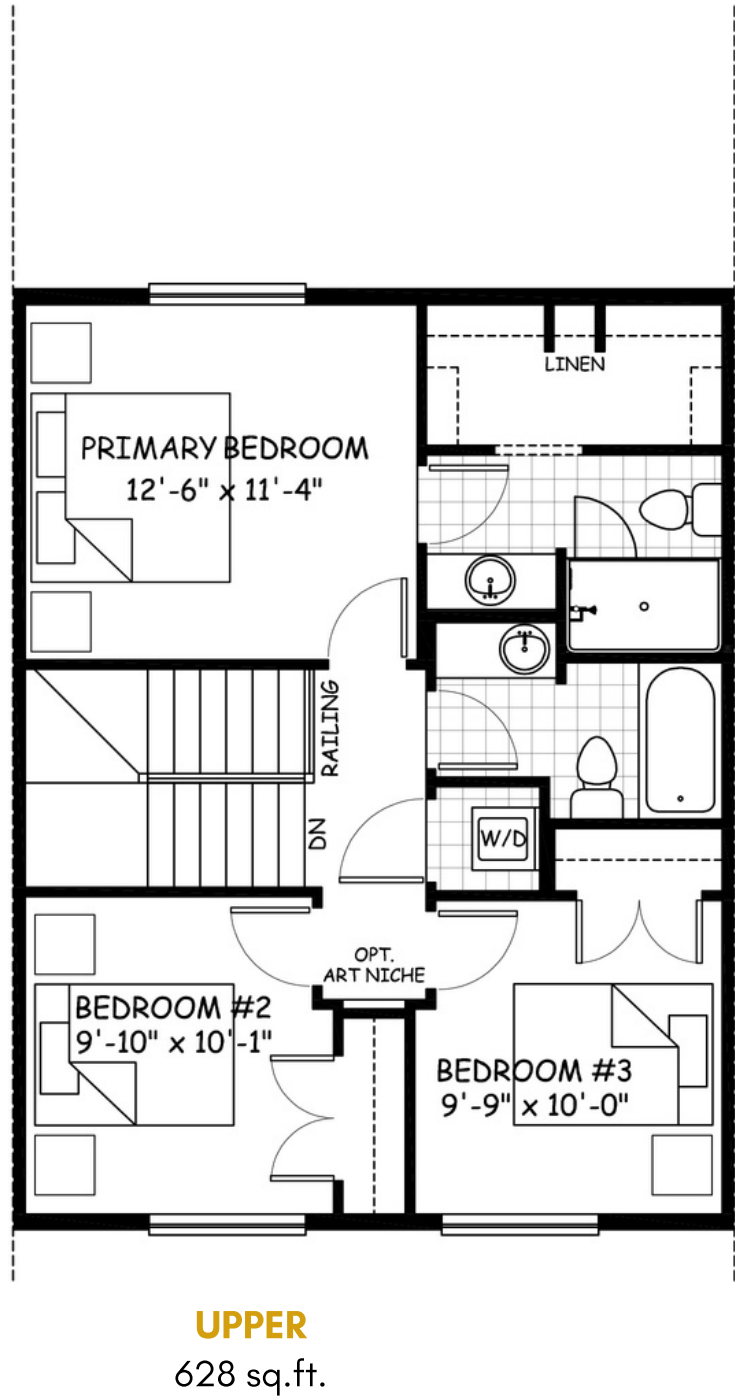
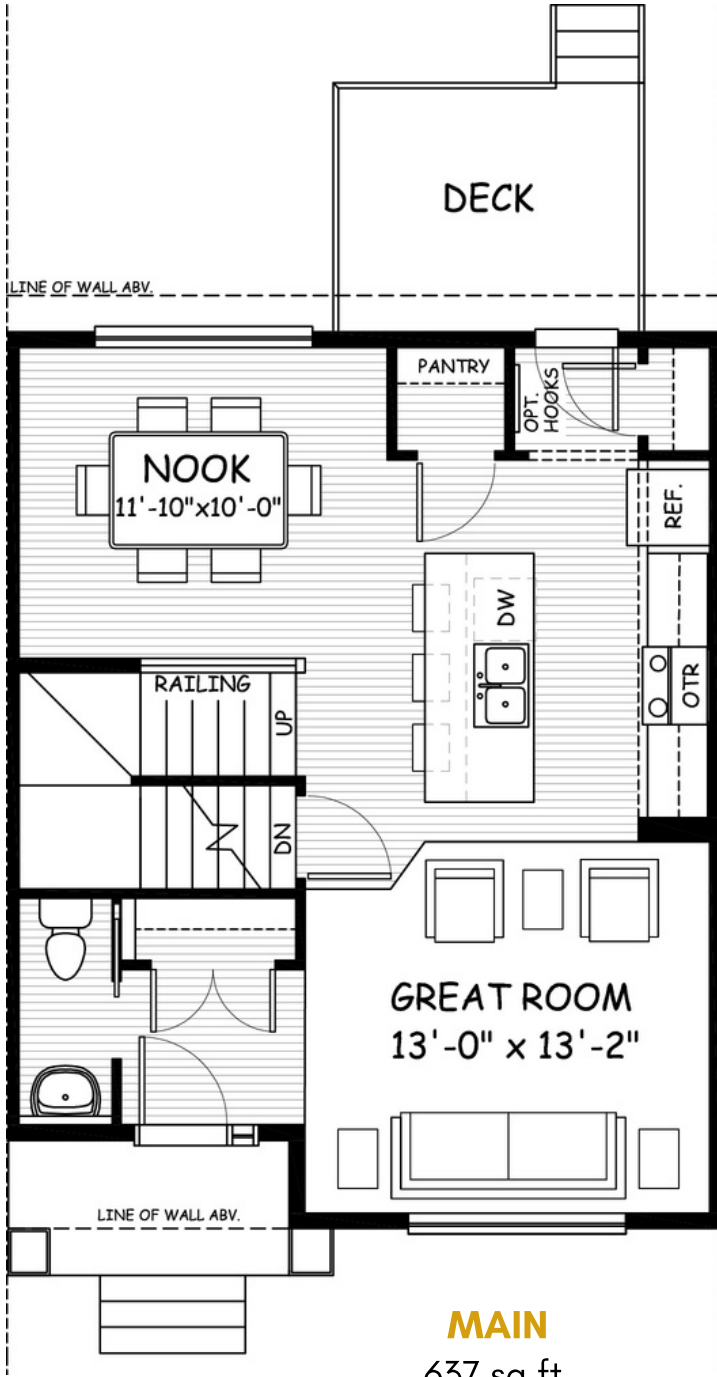


Artists's representation, may not be exactly as shown - all dimensions are approximate. All plans/designs are the exclusive property of Douglas Homes Ltd. Prices are subject to change without notice.

the Louise

1265 sq.ft.

23' wide
30' long



January 2022. Artists's representation, may not be exactly as shown and all dimensions are approximate. All plans/designs are the exclusive property of Douglas Homes Ltd. Prices are subject to change without notice.

