

the Savannah

1326
sq.ft.



3 bedrooms



2.5 bathrooms



20' wide



NOTES:

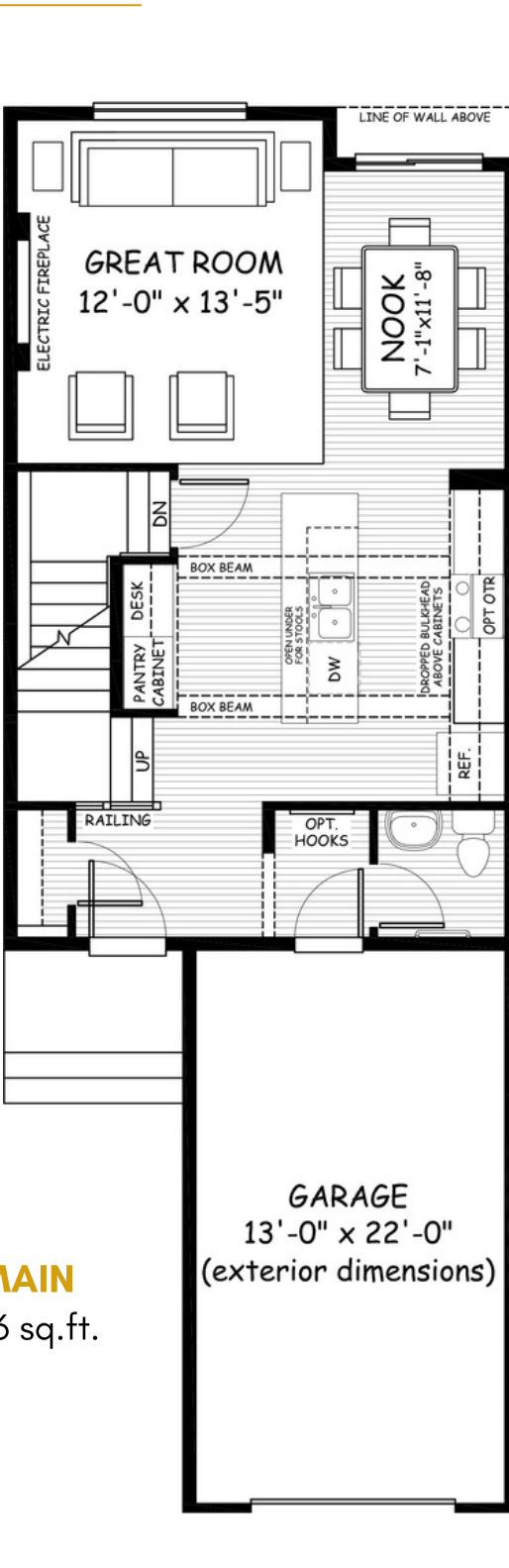


Artists's representation, may not be exactly as shown - all dimensions are approximate. All plans/designs are the exclusive property of Douglas Homes Ltd. Prices are subject to change without notice.

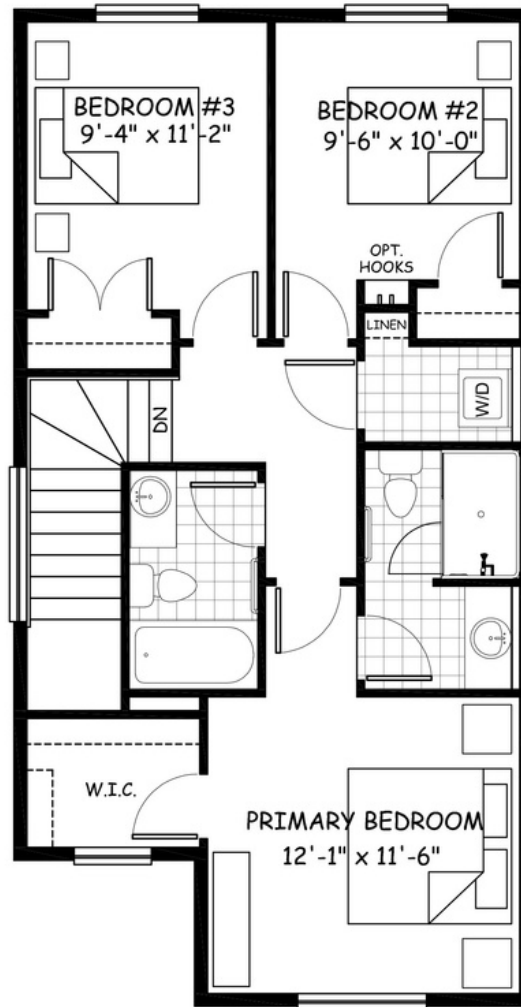
the Savannah

1326 sq.ft.

20' wide
55' long



MAIN
646 sq.ft.



UPPER
680 sq.ft.

April 2021. Artists's representation, may not be exactly as shown and all dimensions are approximate. All plans/designs are the exclusive property of Douglas Homes Ltd. Prices are subject to change without notice.

