

the Pelican Bay

**1602
sq.ft.**



3 bedrooms



2.5 bathrooms



23' wide



NOTES:

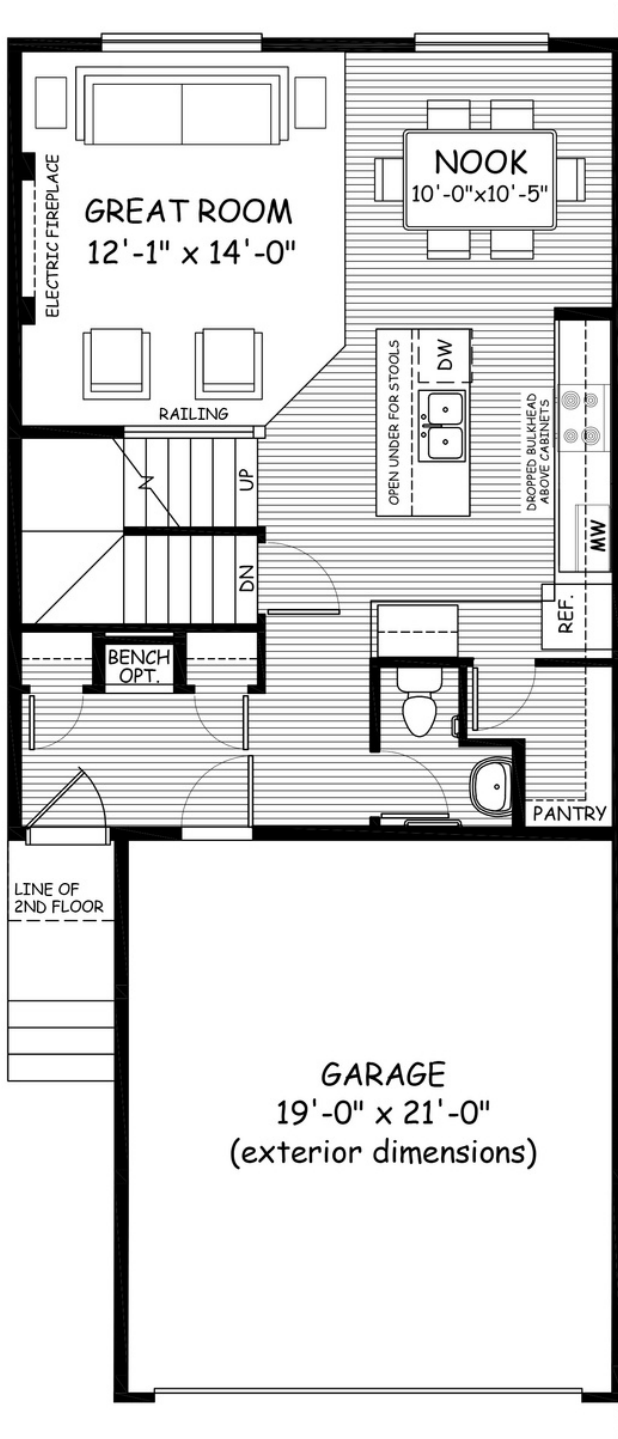


Artists's representation, may not be exactly as shown - all dimensions are approximate. All plans/designs are the exclusive property of Douglas Homes Ltd. Prices are subject to change without notice.

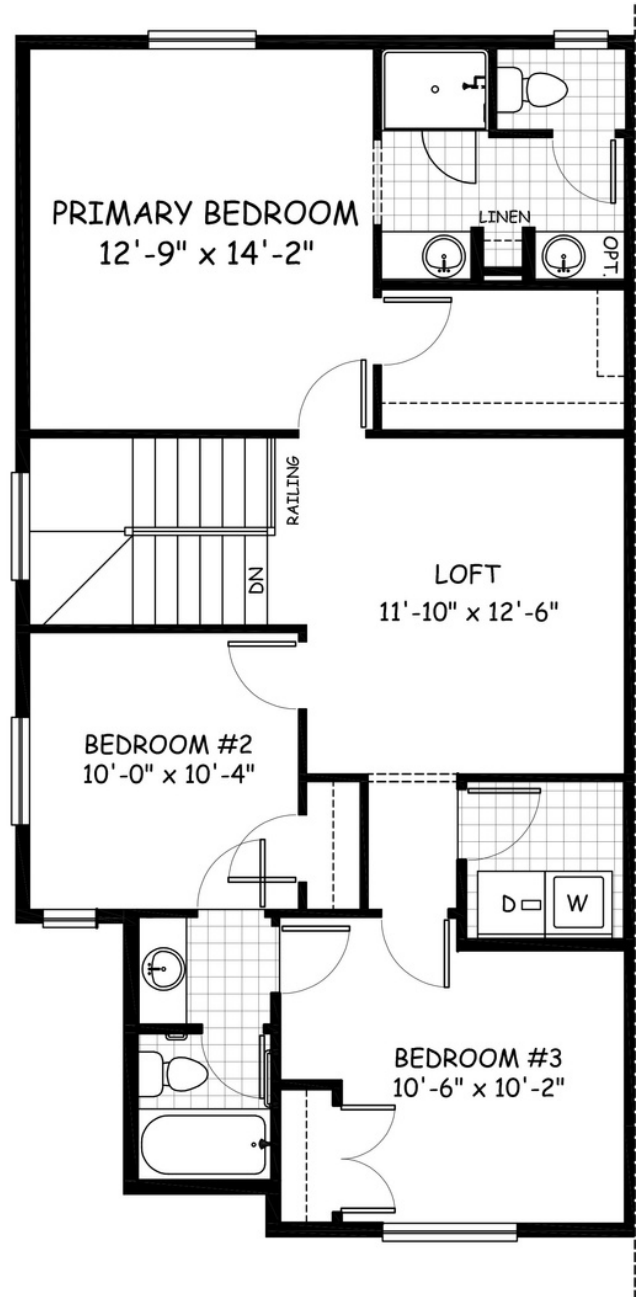
the Pelican Bay

1602 sq.ft.

23' wide
50' long



MAIN
690 sq.ft.



UPPER
912 sq.ft.

Feb. 2023. Artists's representation, may not be exactly as shown and all dimensions are approximate.
All plans/designs are the exclusive property of Douglas Homes Ltd. Prices are subject to change without notice.

DH
DOUGLAS HOMES
— PERFECT FIT —