

# the **Bow**

**1600  
sq.ft.**



3 bedrooms



2.5 bathrooms



22' wide



NOTES:

---

---

---

---

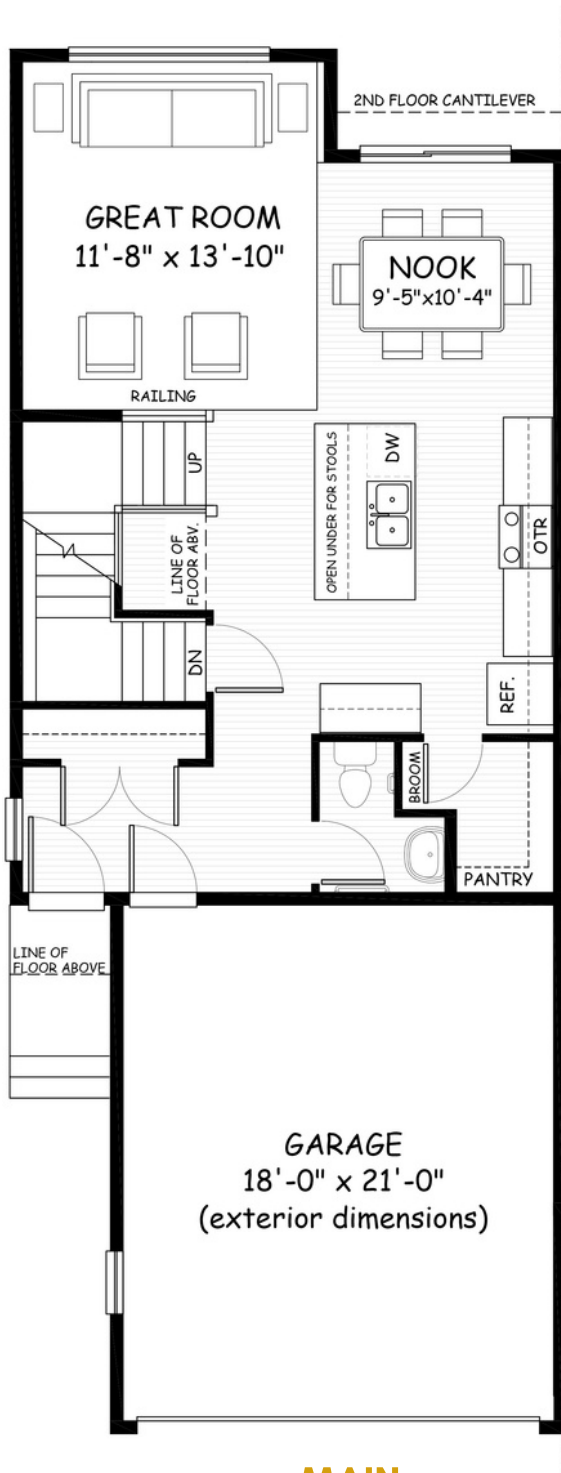


Artists's representation, may not be exactly as shown - all dimensions are approximate. All plans/designs are the exclusive property of Douglas Homes Ltd. Prices are subject to change without notice.

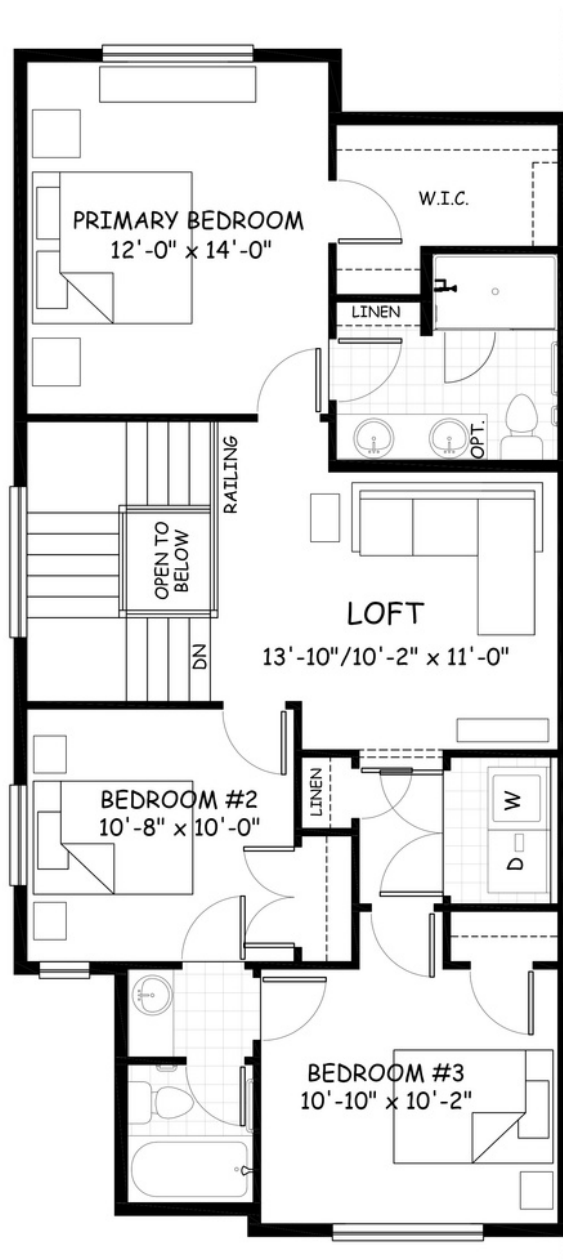
# the Bow

**1600 sq.ft.**

22' wide  
54' long



**MAIN**  
712 sq.ft.



**UPPER**  
888 sq.ft.

February 2022. Artists's representation, may not be exactly as shown and all dimensions are approximate. All plans/designs are the exclusive property of Douglas Homes Ltd. Prices are subject to change without notice.

