

# *the* Mount Rundle 1

**2010  
sq.ft.**



3 bedrooms



2.5 bathrooms



26' wide



NOTES:

---

---

---

---

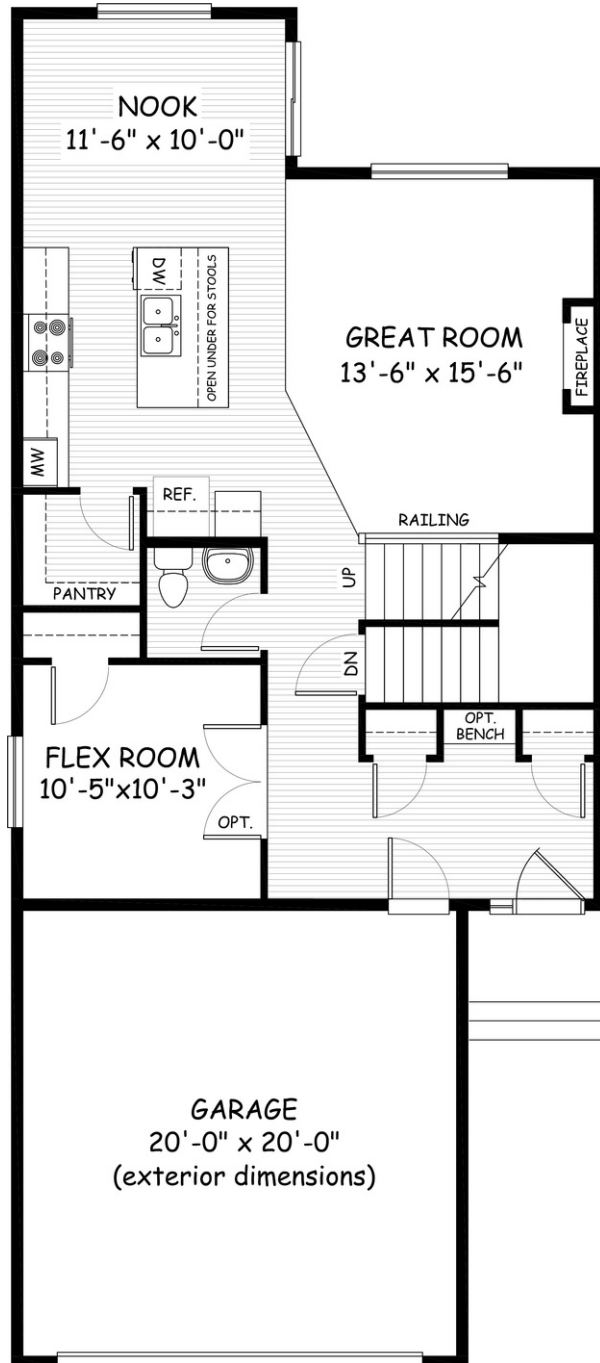


Artists's representation, may not be exactly as shown - all dimensions are approximate. All plans/designs are the exclusive property of Douglas Homes Ltd. Prices are subject to change without notice.

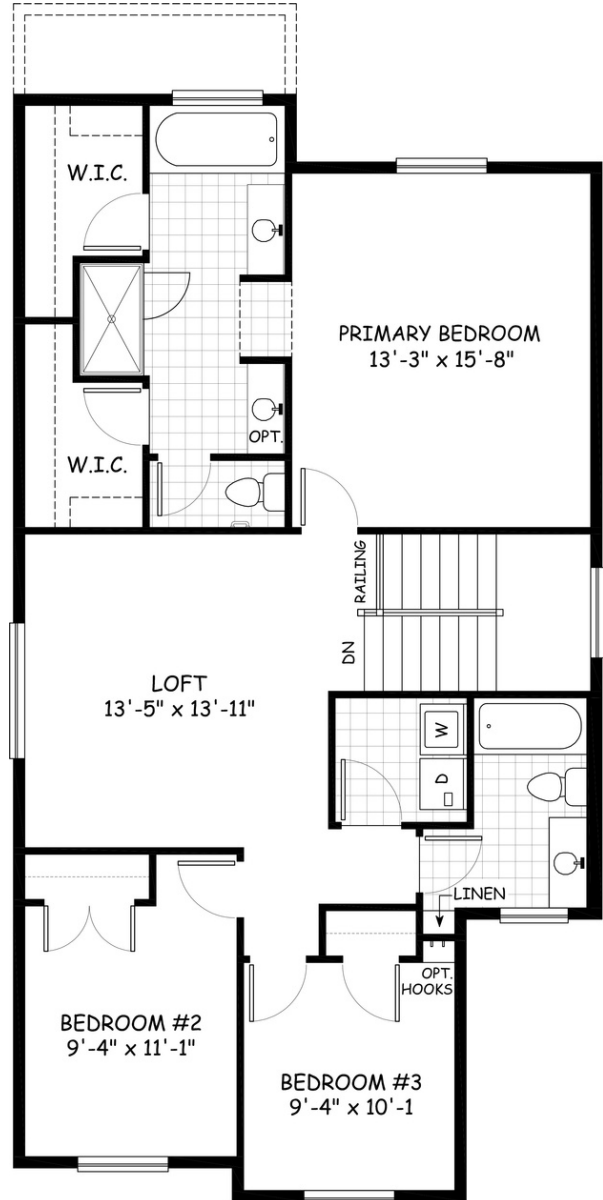
# the Mount Rundle 1

**2010 sq.ft.**

26' wide  
59'-6" long



**MAIN**  
933 sq.ft.



**UPPER**  
1077 sq.ft.

April 2021. Artists's representation, may not be exactly as shown and all dimensions are approximate.  
All plans/designs are the exclusive property of Douglas Homes Ltd. Prices are subject to change without notice.

