

the Rawson

1451
sq.ft.



3 bedrooms



2.5 bathrooms



23' wide



WATERFORD TOWNHOME STANDARD FEATURES

- ✓ No condo fees
- ✓ Fully landscaped
- ✓ Hardwood main floor
- ✓ Quartz countertops
- ✓ Wrought iron railings
- ✓ Full size, undeveloped basement
- ✓ Detached double car garage
- ✓ Upscale kitchen cabinets
- ✓ Stainless steel appliances
- ✓ 9' high ceiling to main floor

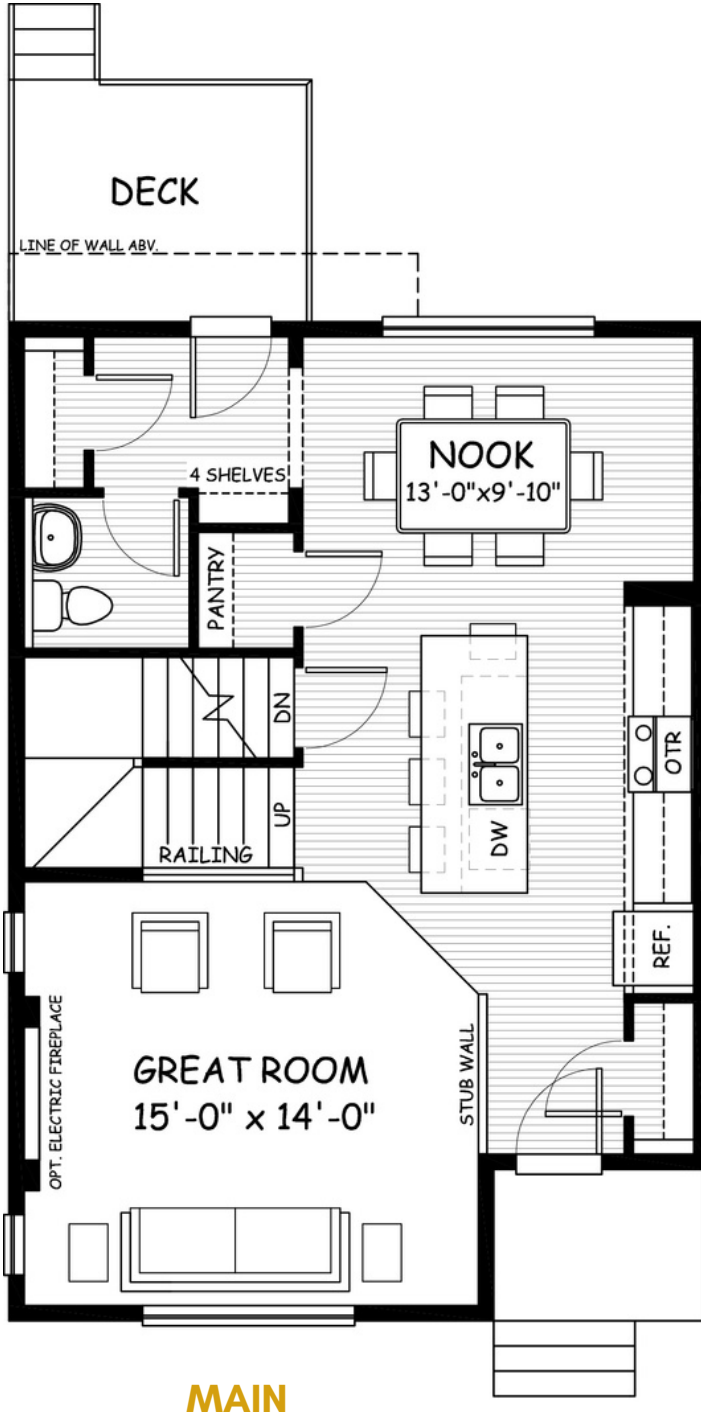


Artists's representation, may not be exactly as shown - all dimensions are approximate. All plans/designs are the exclusive property of Douglas Homes Ltd. Prices are subject to change without notice.

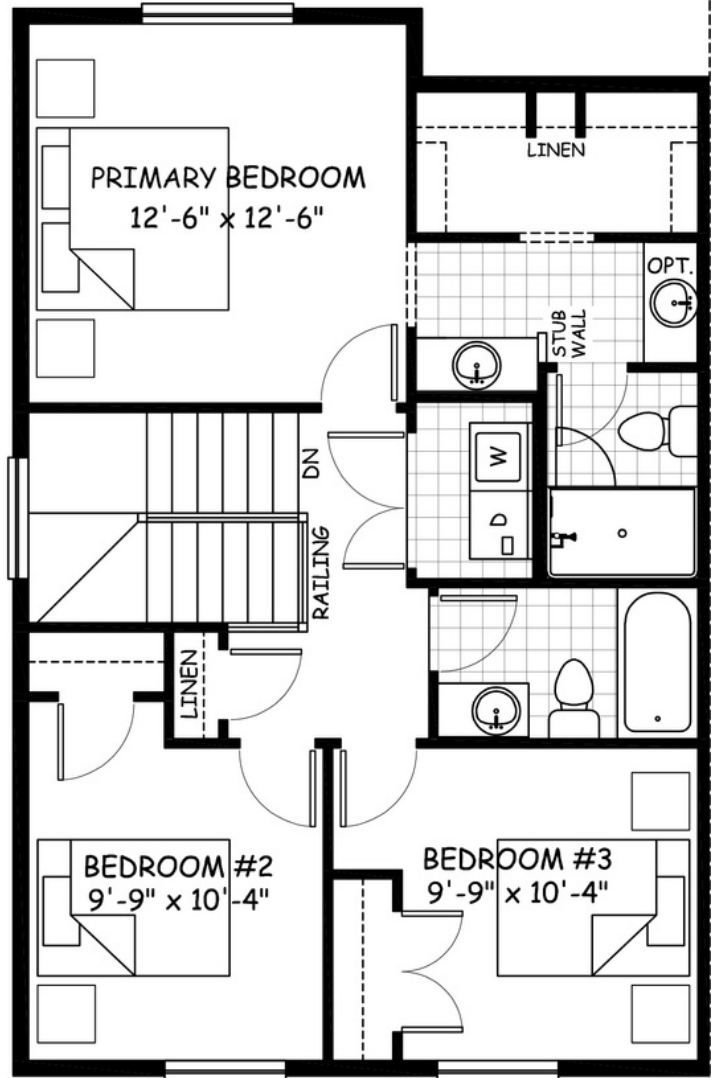
the Rawson

1451 sq.ft.

23' wide
35'-3" long



MAIN
724 sq.ft.



UPPER
727 sq.ft.

January 2022. Artists's representation, may not be exactly as shown and all dimensions are approximate. All plans/designs are the exclusive property of Douglas Homes Ltd. Prices are subject to change without notice.

