

the **St. Andrews**

1290
sq.ft.



3 bedrooms



2.5 bathrooms



20' wide



NOTES:

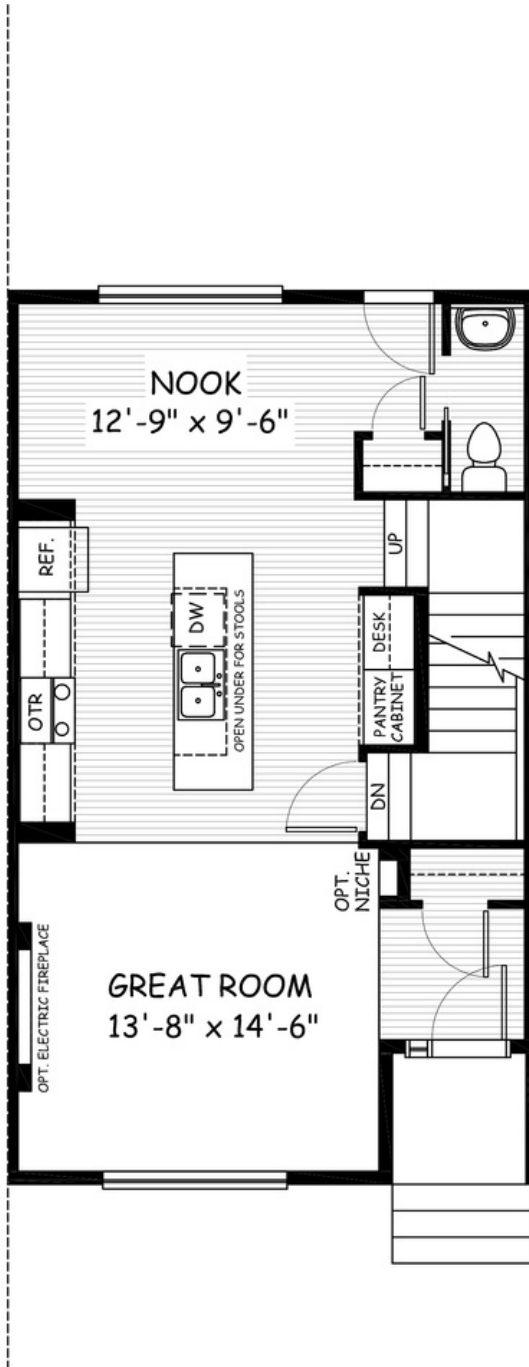
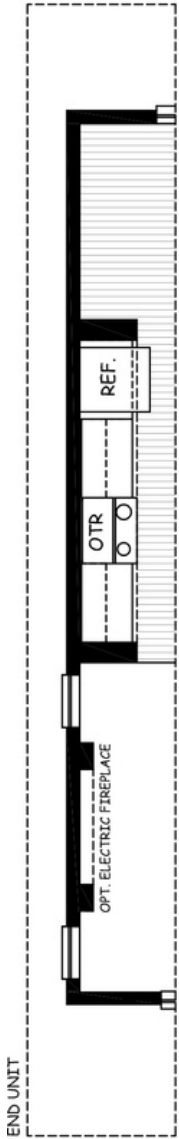


Artists's representation, may not be exactly as shown - all dimensions are approximate. All plans/designs are the exclusive property of Douglas Homes Ltd. Prices are subject to change without notice.

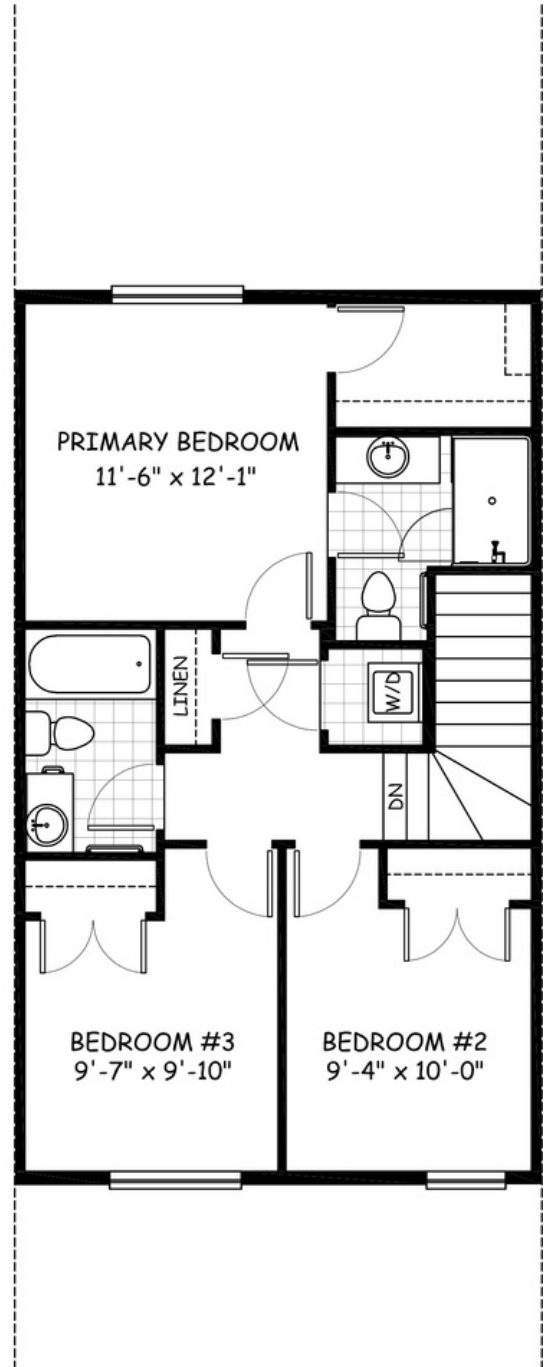
the St. Andrews

1290 sq.ft.

20' wide
34'-8" long



MAIN
654 sq.ft.



UPPER
636 sq.ft.

January 2022. Artists's representation, may not be exactly as shown and all dimensions are approximate. All plans/designs are the exclusive property of Douglas Homes Ltd. Prices are subject to change without notice.

