


CANBERRA

360 Lawthorn Way SE • Lanark, Airdrie

 1,490 sq ft

 3 bedrooms

 2.5 bathrooms

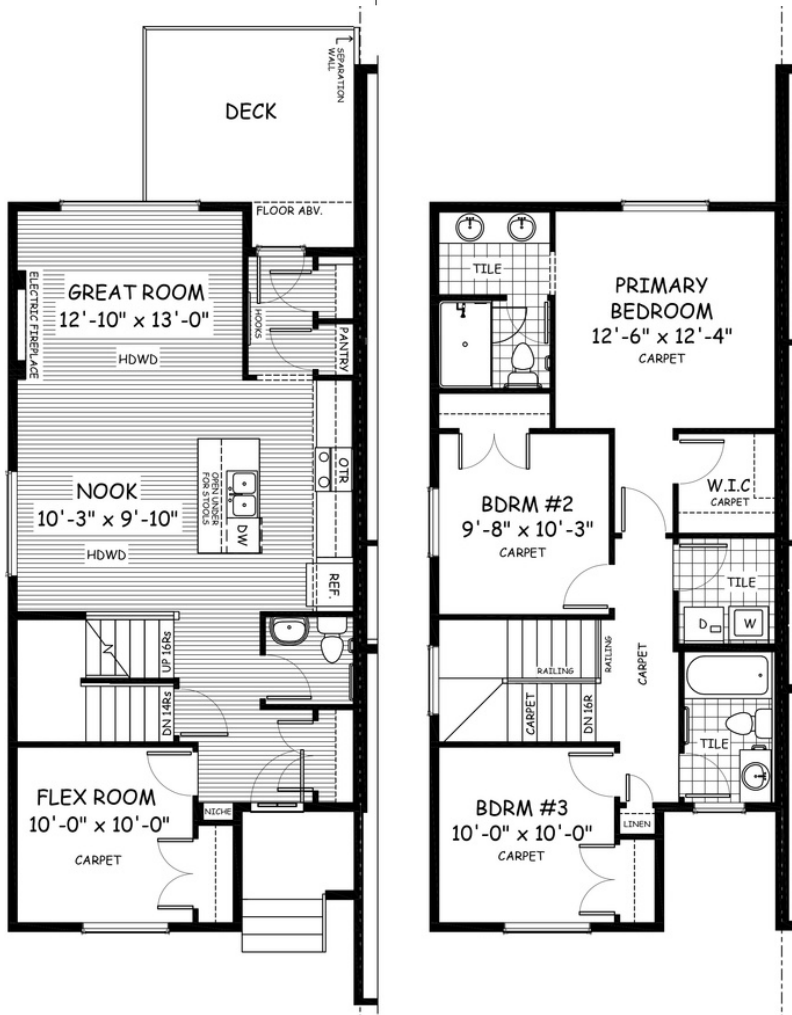


FEATURES

- ★ **Walk-Out Basement**
- ✓ Duplex (Left Unit)
- ✓ Rear Parking Pad
- ✓ Flex Room
- ✓ 9' Main Floor Ceiling
- ✓ Quartz Countertops
- ✓ Electric Fireplace
- ✓ Hardwood Main Floor
- ✓ Upper Floor Laundry
- ✓ Double sinks to Ensuite



NOTES



*Price includes lot&gst. Price, features & plan are subject to change at any time. All plans/designs are the exclusive property of Douglas Homes Ltd.