


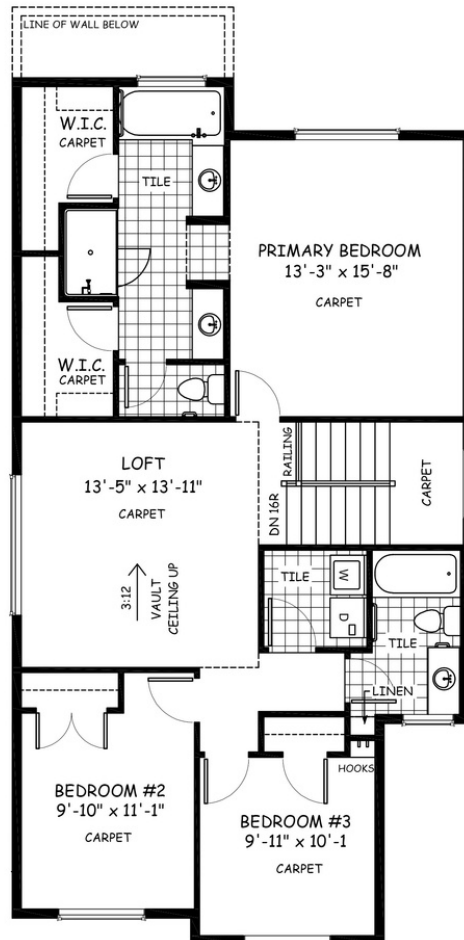
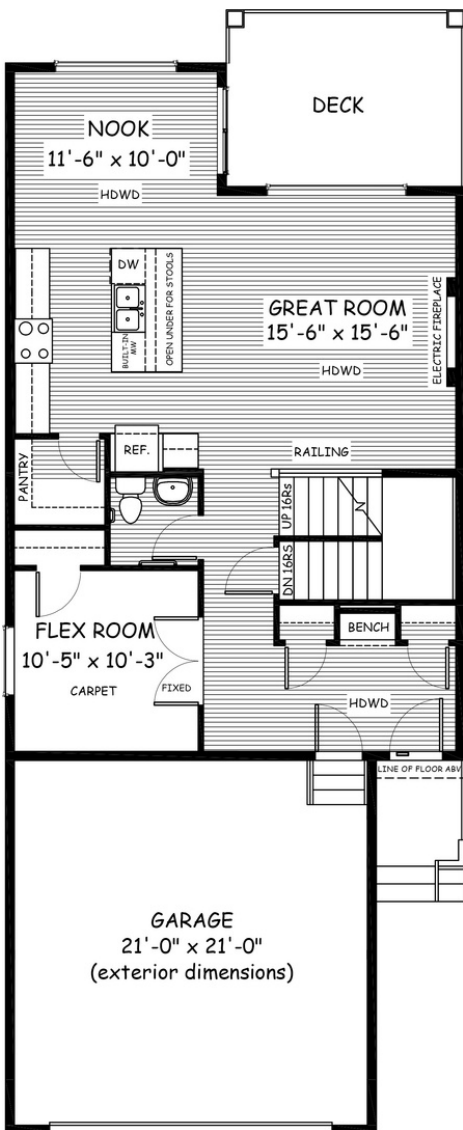
# MOUNT RUNDLE

248 Precedence View • Precedence, Cochrane

 2022 sq ft

 3 bedrooms

 2.5 bathrooms



## FEATURES

- ★ 9' Walk-Out Basement
- ✓ Loft with Vaulted Ceiling
- ✓ Rear Treated Wood Deck
- ✓ 9' Main Floor Ceiling
- ✓ Quartz Countertops
- ✓ Electric Fireplace
- ✓ Hardwood Floors
- ✓ Tile to Baths/Laundry
- ✓ Double Sinks to Ensuite



## NOTES

---



---



---



---



\*Price includes lot&gst. Price, features & plan are subject to change at any time. All plans/designs are the exclusive property of Douglas Homes Ltd.