


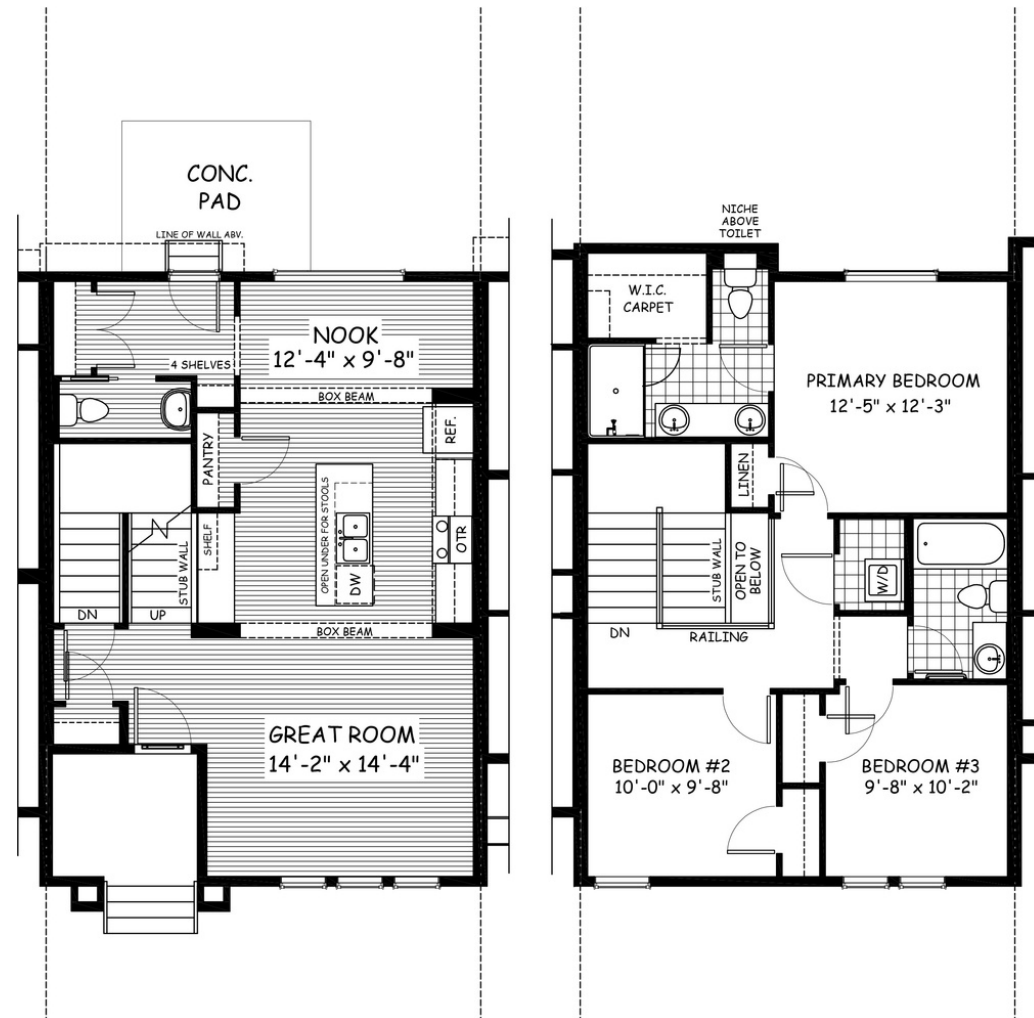
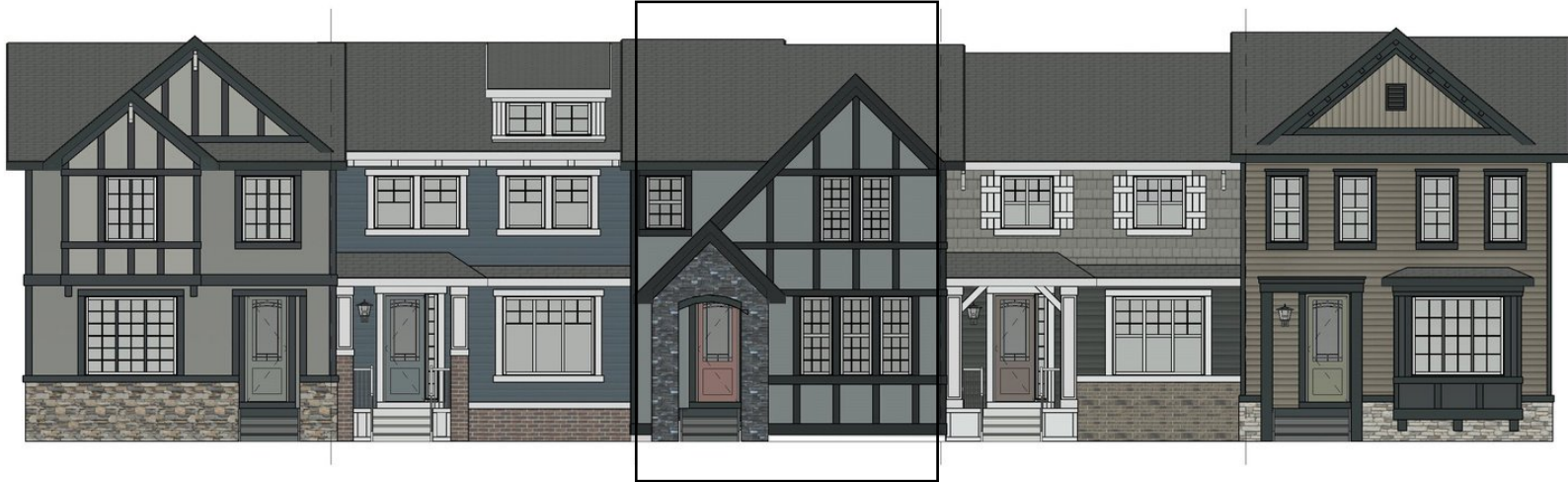
MORaine

165 Waterford Blvd • Waterford, Chestermere

 1378 sq ft

 3 bedrooms

 2.5 bathrooms



FEATURES

-  Townhouse, No Condo Fees
-  Detached Double Car Garage
-  Landscaping & Fencing
-  Undeveloped Basement
-  9' Main Floor Ceiling
-  Read Concrete Pad
-  Quartz Countertops
-  Hardwood Floors
-  Double Sinks to Ensuite
-  Wrought Iron Railings



*Price includes lot&gst. Price, features & plan are subject to change at any time. All plans/designs are the exclusive property of Douglas Homes Ltd.