


PELICAN BAY

848 Lawthorn Way SE • Lanark Landing, Airdrie

 1,603 sq ft

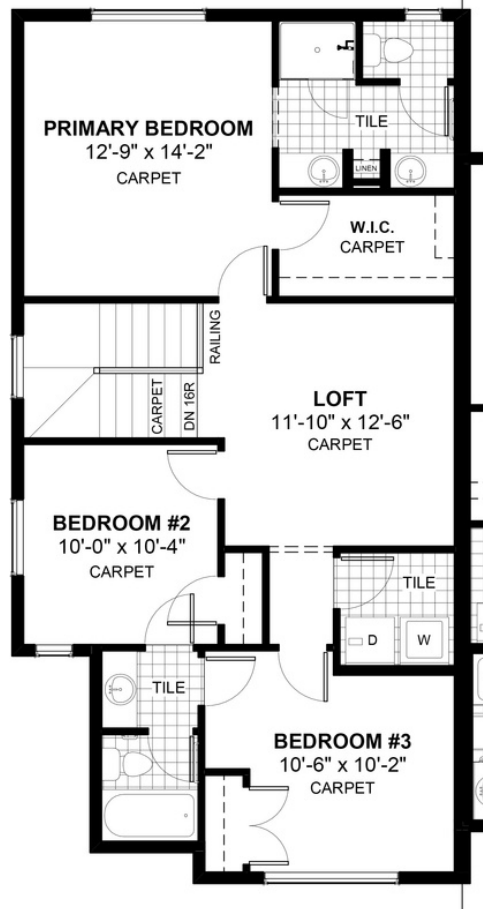
 3 bedrooms

 2.5 bathrooms



FEATURES

- ✓ Duplex (Left Unit)
- ✓ Double Car Garage
- ✓ Basement Side Entry
- ✓ Upper Floor Loft
- ✓ Built-In Bench to Entry
- ✓ 9' Main Floor Ceiling
- ✓ Quartz Countertops
- ✓ Electric Fireplace
- ✓ EnginHardwood Main Floor
- ✓ Tile Baths/Laundry
- ✓ Double Sinks to Ensuite



NOTES



*Price includes lot&gst. Price, features & plan are subject to change at any time. All plans/designs are the exclusive property of Douglas Homes Ltd.