


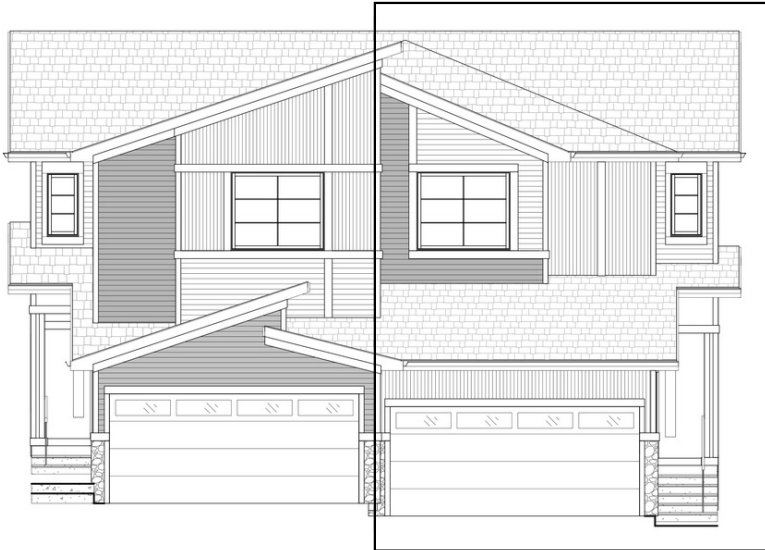
PEYTO

332 Precedence Hill • Precedence, Cochrane

 1476 sq ft

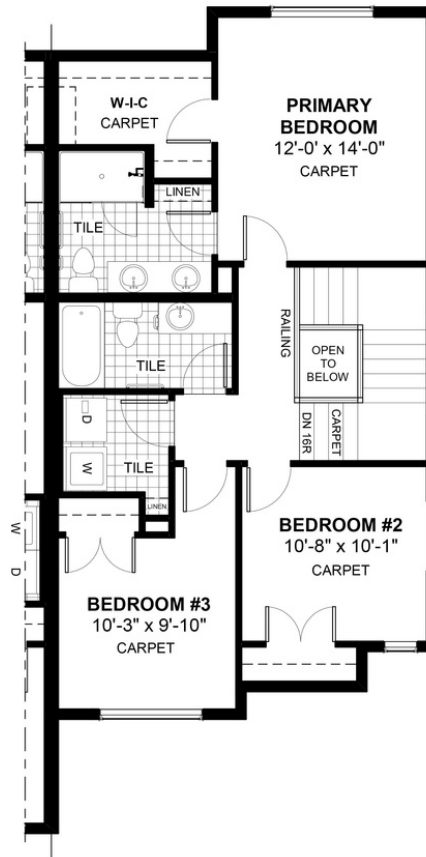
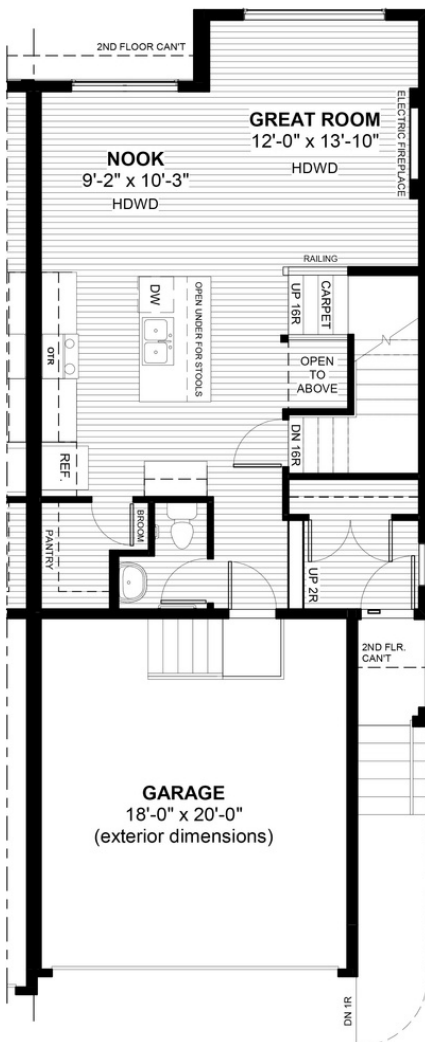
 3 bedrooms

 2.5 bathrooms



FEATURES

- ★ **9' Basement**
- ✓ Duplex (Right Unit)
- ✓ Dropped Foyer
- ✓ 9' Main Floor Ceiling
- ✓ Quartz Countertops
- ✓ Electric Fireplace
- ✓ Tile Bath/Laundry
- ✓ Hardwood Floors
- ✓ Upper Floor Laundry
- ✓ Double Sinks to Ensuite



NOTES



*Price includes lot&gst. Price, features & plan are subject to change at any time. All plans/designs are the exclusive property of Douglas Homes Ltd.