


MADISON 2

379 Precedence Hill • Precedence, Cochrane

 1,768 sq ft

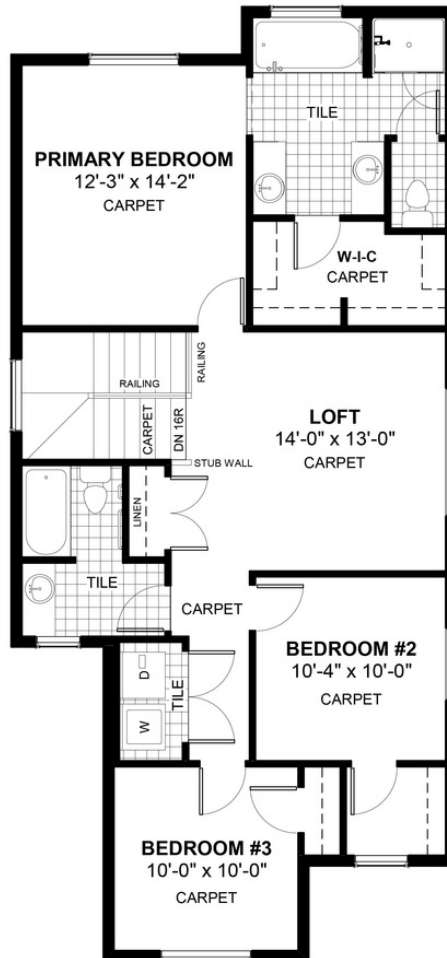
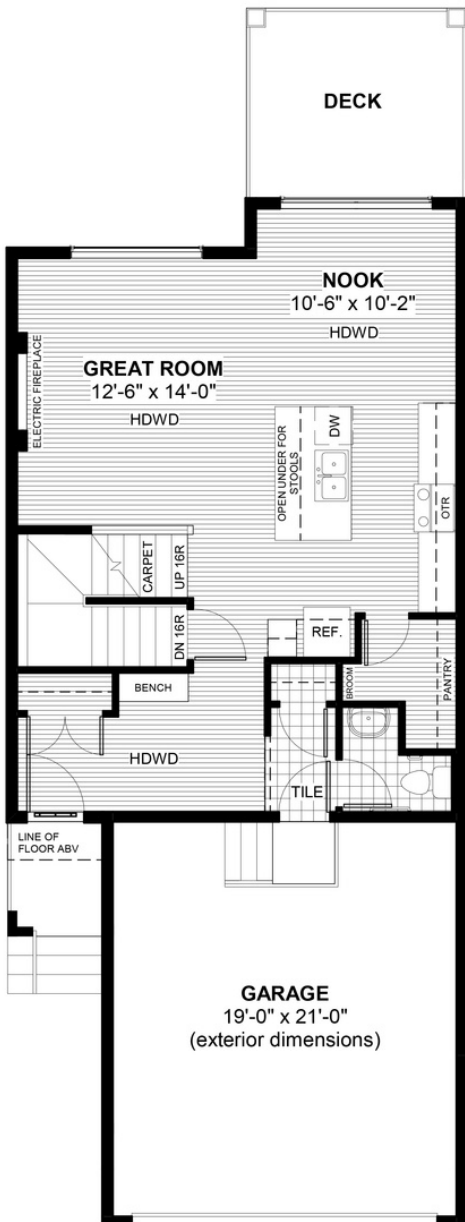
 3 bedrooms

 2.5 bathrooms



FEATURES

- ★ 9' Walk-Out Basement
- ✓ Upper Floor Loft
- ✓ Rear Treated Wood Deck
- ✓ 9' Main Floor Ceiling
- ✓ Quartz Countertops
- ✓ Electric Fireplace
- ✓ Built-In Bench to Entry
- ✓ Hardwood Floors
- ✓ Tile to Baths/Laundry
- ✓ Double Sinks to Ensuite



NOTES



*Price includes lot&gst. Price, features & plan are subject to change at any time. All plans/designs are the exclusive property of Douglas Homes Ltd.