


MELBOURNE

856 Lawthorn Way SE • Lanark, Airdrie

 1,288 sq ft

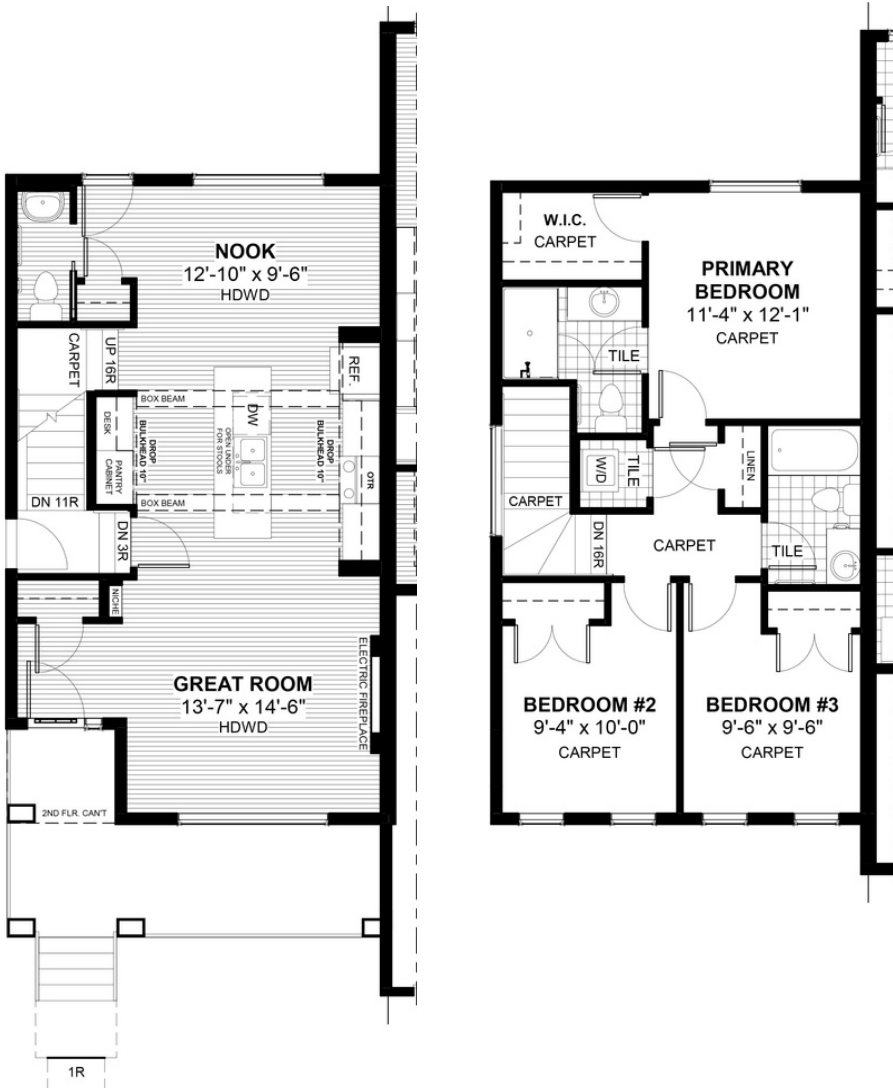
 3 bedrooms

 2.5 bathrooms



FEATURES

- ✓ Duplex (Left Unit)
- ✓ Rear Parking Pad
- ✓ Basement Side Entry
- ✓ Full Width Porch
- ✓ 9' Main Floor Ceiling
- ✓ Quartz Countertops
- ✓ Upper Floor Laundry
- ✓ Electric Fireplace
- ✓ Eng. Hardwood Main Floor
- ✓ Tile Baths/Laundry



NOTES



*Price includes lot&gst. Price, features & plan are subject to change at any time. All plans/designs are the exclusive property of Douglas Homes Ltd.