


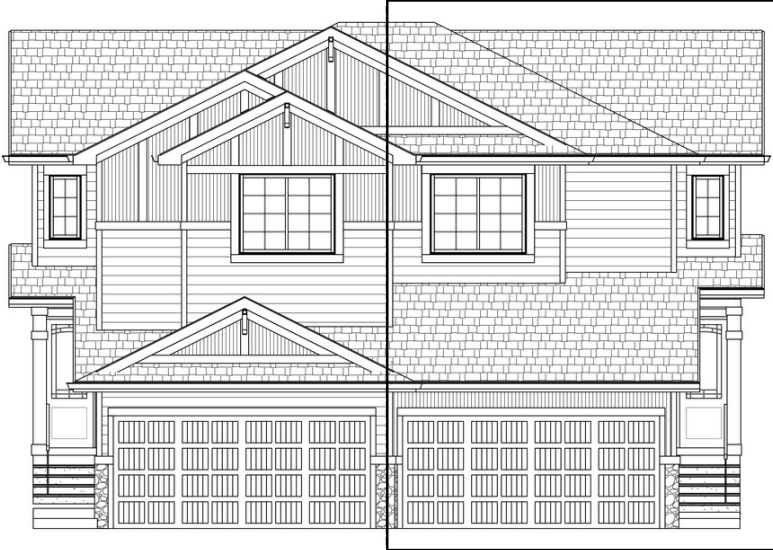
PEYTO

122 Waterford Road • Waterford, Chestermere

 1476 sq ft

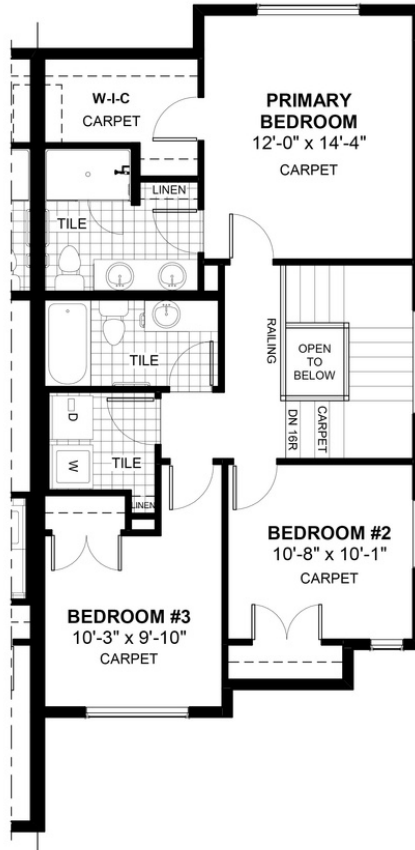
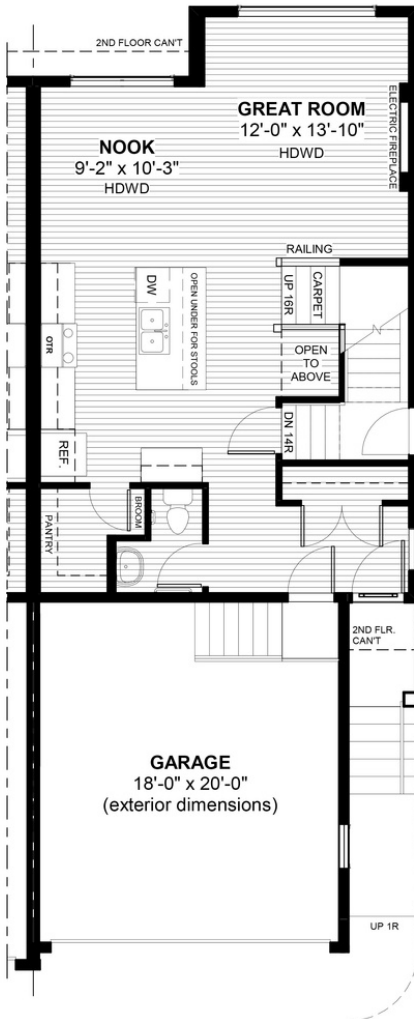
 3 bedrooms

 2.5 bathrooms



FEATURES

- ✓ Duplex (Right Unit)
- ✓ Basement Side Entry
- ✓ 9' Main Floor Ceiling
- ✓ Quartz Countertops
- ✓ Electric Fireplace
- ✓ Hardwood Floors
- ✓ Wrought Iron Railings
- ✓ Upper Floor Laundry
- ✓ Double sinks to Ensuite



NOTES



*Price includes lot&gst. Price, features & plan are subject to change at any time. All plans/designs are the exclusive property of Douglas Homes Ltd.