


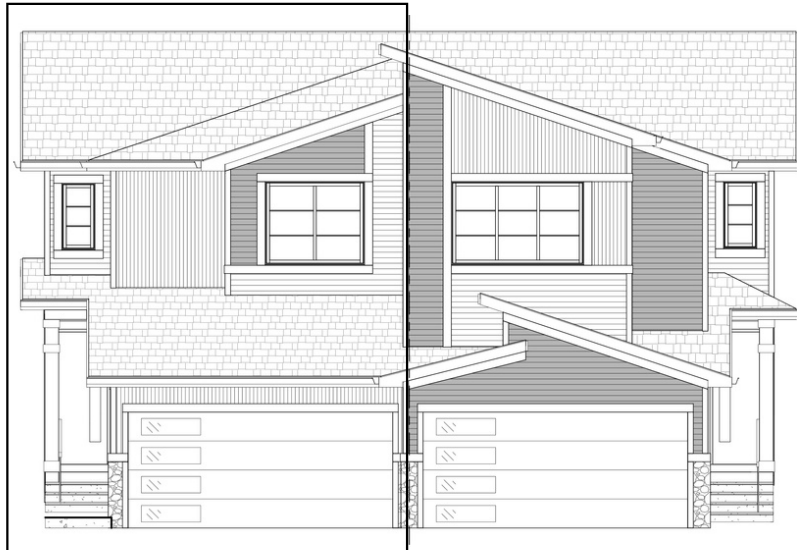
# PEYTO

296 Precedence Hill • Precedence, Cochrane

 1478 sq ft

 3 bedrooms

 2.5 bathrooms



## FEATURES

- ✓ Duplex (Left Unit)
- ✓ Basement Side Entry
- ✓ 9' Main Floor Ceiling
- ✓ Quartz Countertops
- ✓ Electric Fireplace
- ✓ Tile Bath/Laundry
- ✓ Eng. Hardwood Floors
- ✓ Upper Floor Laundry
- ✓ Double Sinks to Ensuite



## NOTES

---



---



---



---



\*Price includes lot&gst. Price, features & plan are subject to change at any time. All plans/designs are the exclusive property of Douglas Homes Ltd.