


# SYDNEY

472 Creekrun Crescent • Cobblestone Creek, Airdrie

 1,376 sq ft

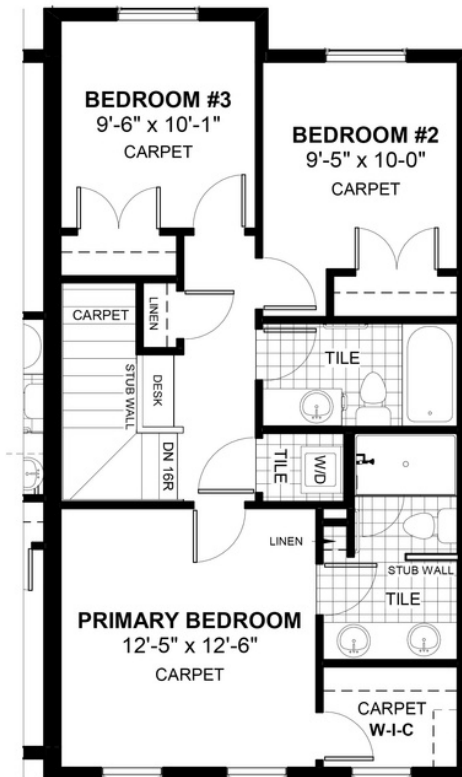
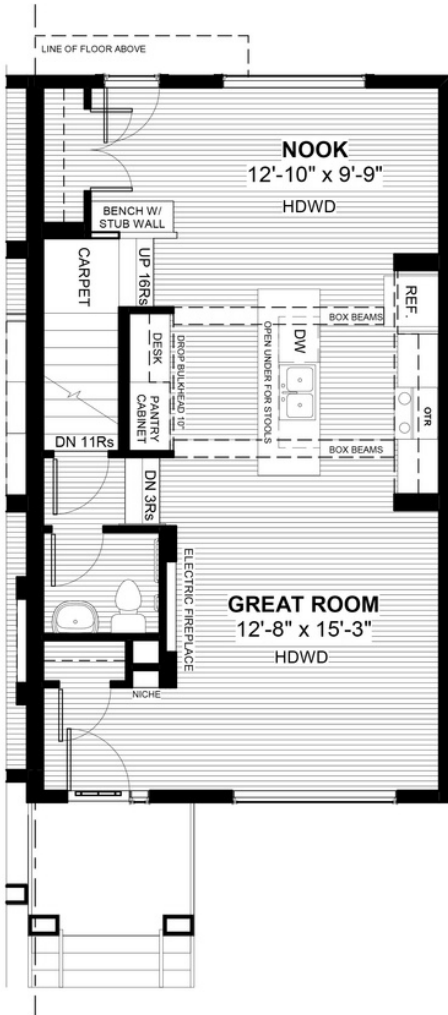
 3 bedrooms

 2.5 bathrooms



## FEATURES

- ✓ Duplex (Right Unit)
- ✓ Rear Parking Pad
- ✓ Built-In Bench to Rear Entry
- ✓ 9' Main Floor Ceiling
- ✓ Quartz Countertops
- ✓ Electric Fireplace
- ✓ Upper Floor Laundry
- ✓ Eng. Hardwood Main Floor
- ✓ Built-In Desks
- ✓ Double Sinks to Ensuite
- ✓ Tile Baths/Laundry



## NOTES



\*Price includes lot&gst. Price, features & plan are subject to change at any time. All plans/designs are the exclusive property of Douglas Homes Ltd.