


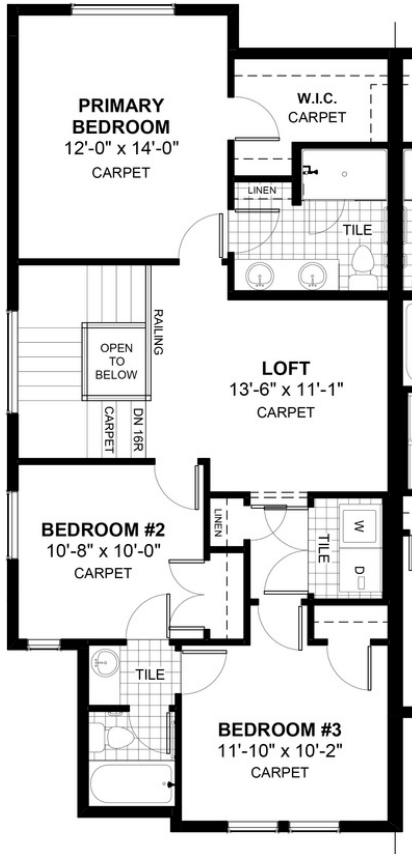
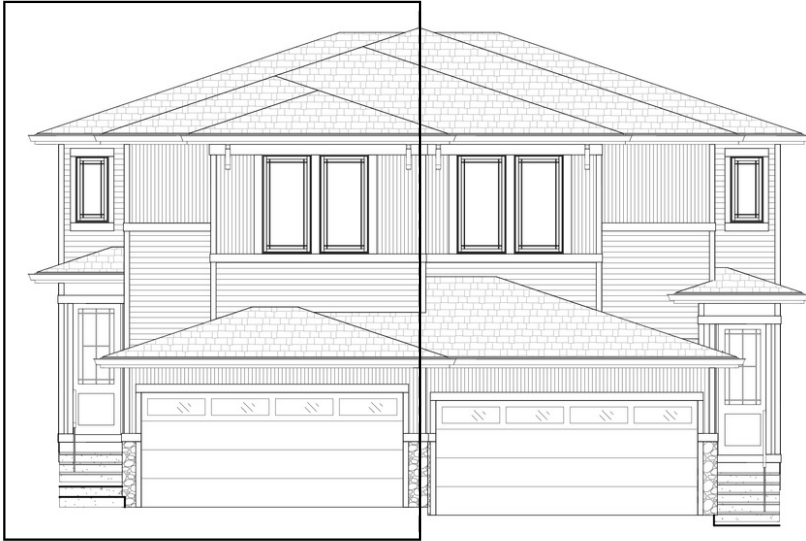
BOW

320 Precedence Hill • Precedence, Cochrane

 1602 sq ft

 3 bedrooms

 2.5 bathrooms



FEATURES

- ✓ Duplex (Left Unit)
- ✓ Basement Side Entry
- ✓ Upper Floor Loft
- ✓ 9' Main Floor Ceiling
- ✓ Quartz Countertops
- ✓ Electric Fireplace
- ✓ Eng. Hardwood Floors
- ✓ Upper Floor Laundry
- ✓ Double sinks to Ensuite
- ✓ Wrought Iron Railings



NOTES



*Price includes lot&gst. Price, features & plan are subject to change at any time. All plans/designs are the exclusive property of Douglas Homes Ltd.