


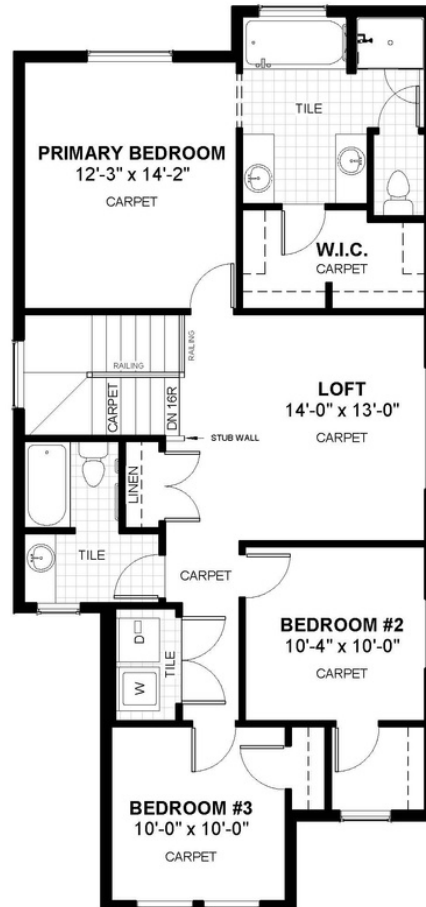
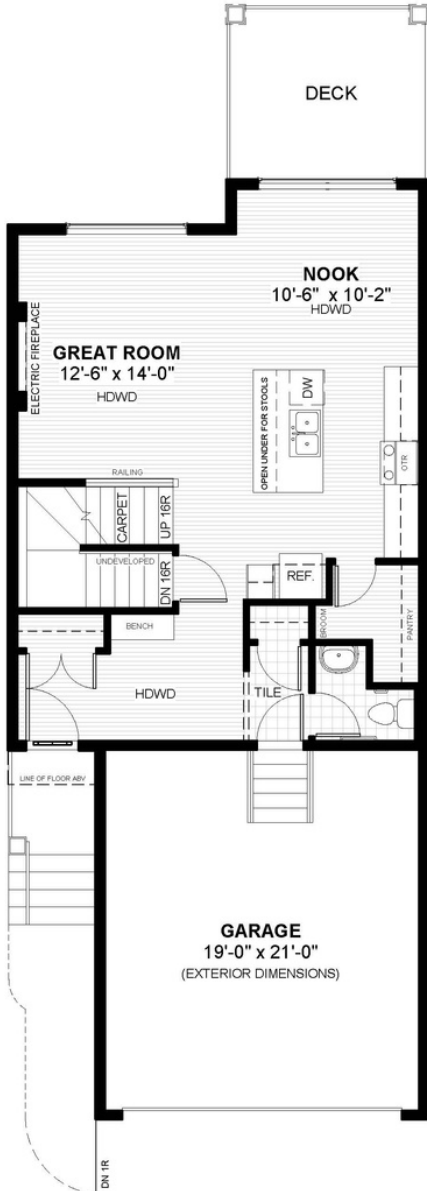
MADISON 2

363 Precedence Hill • Sunset Ridge, Cochrane

 1,768 sq ft

 3 bedrooms

 2.5 bathrooms



FEATURES

- ★ **Walk-Out Basement**
- ✓ Upper Floor Loft
- ✓ Rear Treated Wood Deck
- ✓ 9' Main Floor Ceiling
- ✓ Quartz Countertops
- ✓ Electric Fireplace
- ✓ Built-In Bench to Entry
- ✓ Eng. Hardwood Floors
- ✓ Tile to Baths/Laundry
- ✓ Double Vanities to Ensuite
- ✓ Upper Floor Laundry



NOTES



*Price includes lot&gst. Price, features & plan are subject to change at any time. All plans/designs are the exclusive property of Douglas Homes Ltd.