


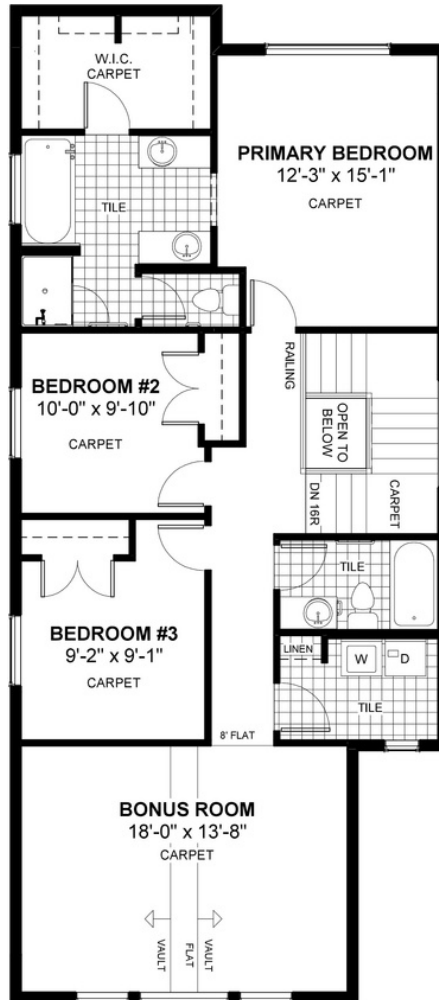
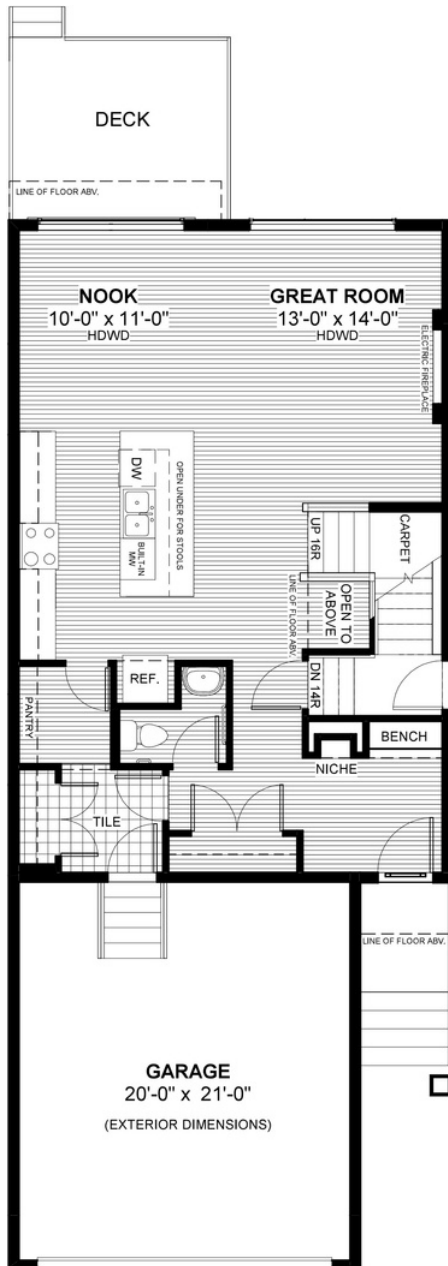
# SILVERTON

154 Sundown Close • Sunset Ridge, Cochrane

 2004 sq ft

 3 bedrooms

 2.5 bathrooms



## FEATURES

- ✓ Basement Side Entry
- ✓ Vaulted Ceiling Bonus Room
- ✓ Built-In Bench to Entry
- ✓ Quartz Countertops
- ✓ Electric Fireplace
- ✓ Eng. Hardwood Floors
- ✓ Rear Treated Wood Deck
- ✓ Wrought Iron Railings
- ✓ Double Sinks to Ensuite
- ✓ Large Upper Floor Laundry



## NOTES



\*Price includes lot&gst. Price, features & plan are subject to change at any time. All plans/designs are the exclusive property of Douglas Homes Ltd.