

**Q** 1602 sq ft



This architectural elevation drawing depicts a symmetrical two-story house. The central vertical axis divides the structure into two mirror-image halves. The roof is gabled, with a smaller gable over the central entrance area. The house features a two-car garage at the ground level, each door with four small, diamond-shaped windows. Above the garage, the second story has a large double window with horizontal muntins. To the left and right of this central window are smaller, single windows. The exterior walls are finished with horizontal siding, while the gable ends and a central vertical section are clad in vertical siding. The roof is covered in shingles, and a small porch with a decorative railing is visible on the far left.

- ✓ Duplex (Left Unit)
- ✓ Basement Side Entry
- ✓ Upper Floor Loft
- ✓ 9' Main Floor Ceiling
- ✓ Quartz Countertops
- ✓ Electric Fireplace
- ✓ Eng. Hardwood Floors
- ✓ Upper Floor Laundry
- ✓ Double sinks to Ensuite
- ✓ Wrought Iron Railings



**2ND FLOOR CANT**

**ELECTRIC FIREPLACE**

**GREAT ROOM**  
12'-0" x 13'-10"  
HDWD

**NOOK**  
9'-2" x 10'-3"  
HDWD

**RAILING**

**CARPET**

**UP 1BR**

**OPEN TO ABOVE**

**DN 1BR**

**DW**

**OPEN UNDER FOR STOOLS**

**STOVE**

**REF.**

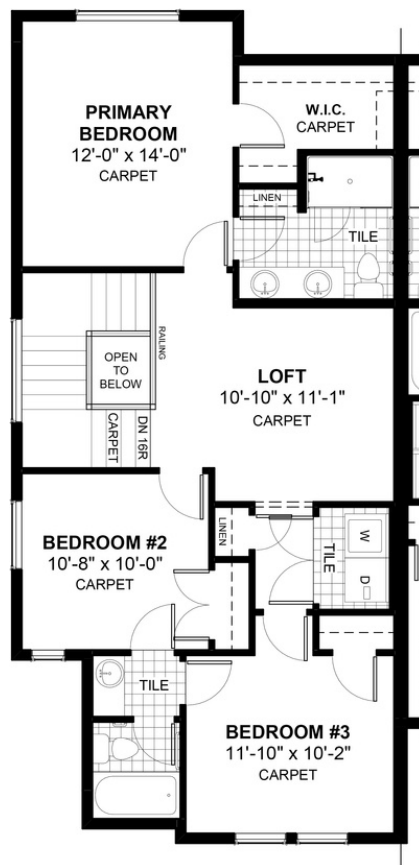
**BATHROOM**

**PAINTRY**

**2ND FLR. CANT**

**UP 1R**

**GARAGE**  
18'-0" x 20'-1"  
(exterior dimensions)



DOUGLAS HOMES  
— PERFECT FIT —

www.douglashomes.net | precedence@douglashomes.net | 403.828.4599