


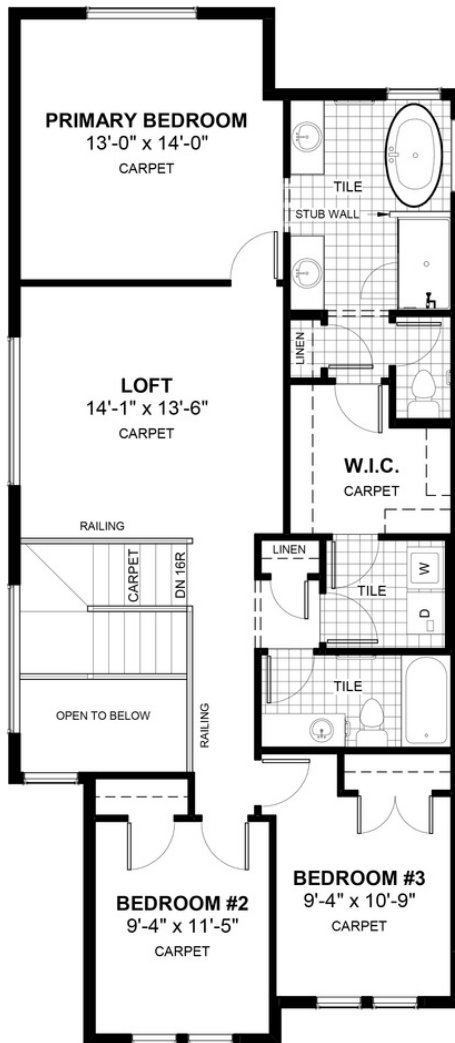
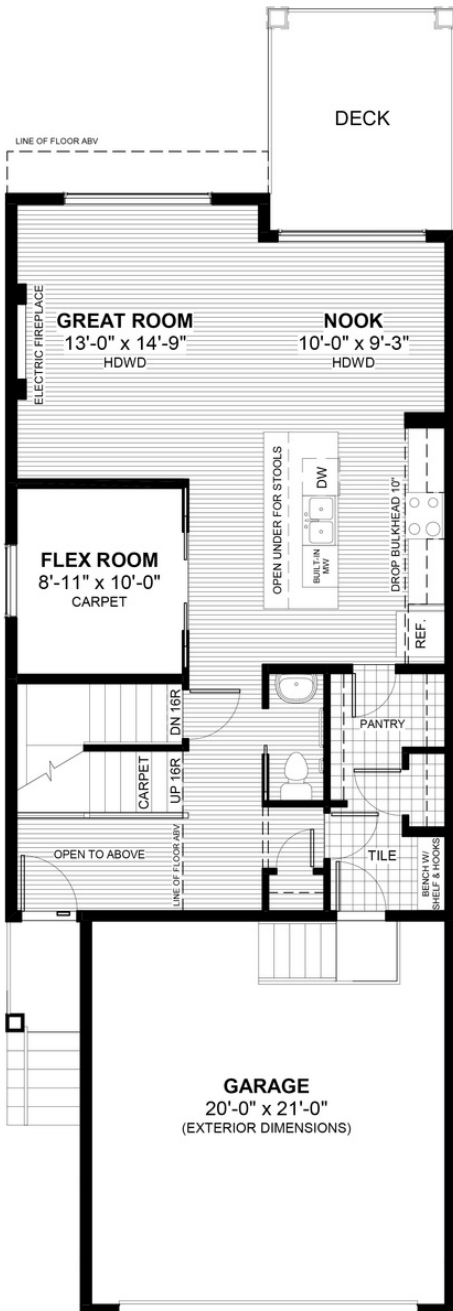
MONTENEGRO 4

355 Precedence Hill • Precedence, Cochrane

 2016 sq ft

 3 bedrooms

 2.5 bathrooms



FEATURES

- ★ **Walk-Out Basement**
- ✓ Upper Floor Loft
- ✓ Rear Treated Wood Deck
- ✓ 9' Main Floor Ceiling
- ✓ Walk-Through Pantry
- ✓ Quartz Countertops
- ✓ Electric Fireplace
- ✓ Eng. Hardwood Floors
- ✓ Main Floor Flex Room
- ✓ Upper Floor Laundry
- ✓ Double Vanities to Ensuite



NOTES



*Price includes lot&gst. Price, features & plan are subject to change at any time. All plans/designs are the exclusive property of Douglas Homes Ltd.