


# VICTORIA

508 River Avenue • Greystone, Cochrane

 1393 sq ft

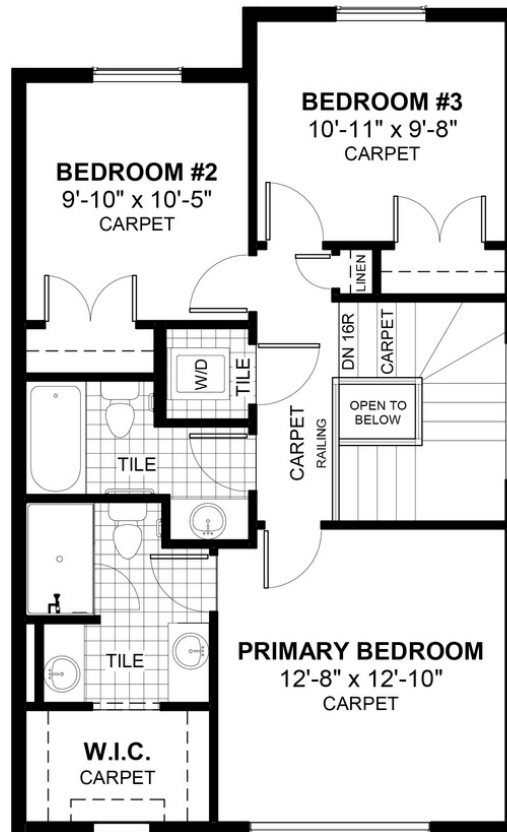
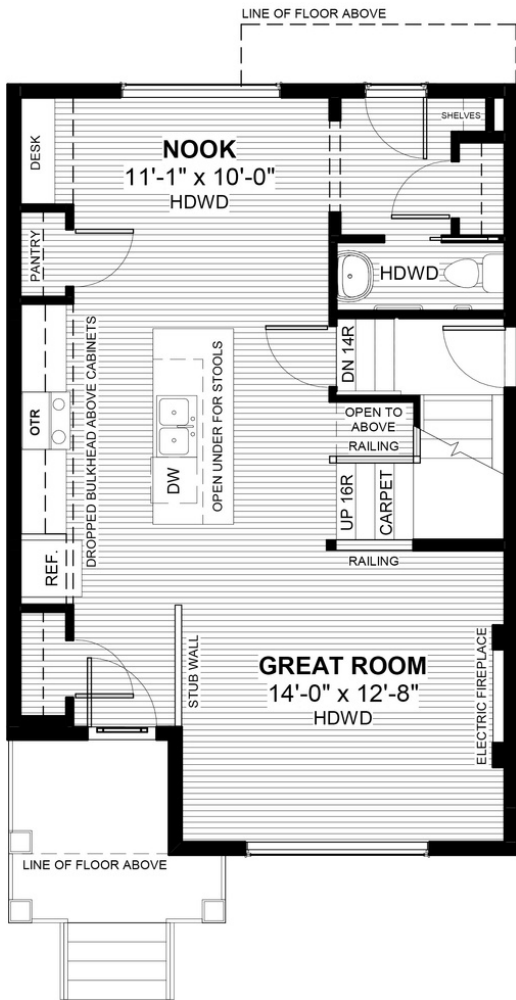
 3 bedrooms

 2.5 bathrooms



## FEATURES

- ✓ Rear Parking Pad
- ✓ Basement Side Entry
- ✓ 9' Main Floor Ceiling
- ✓ Quartz Countertops
- ✓ Electric Fireplace
- ✓ Eng. Hardwood Floors
- ✓ Upper Floor Laundry
- ✓ Tile to Baths/Laundry
- ✓ Built-In Desk to Nook
- ✓ Double Sinks to Ensuite



## NOTES

---



---



---



---



\*Price includes lot&gst. Price, features & plan are subject to change at any time. All plans/designs are the exclusive property of Douglas Homes Ltd.