



# GLACIER

520 River Avenue • Greystone, Cochrane

 1180 sq ft

 3 bedrooms

 2.5 bathrooms

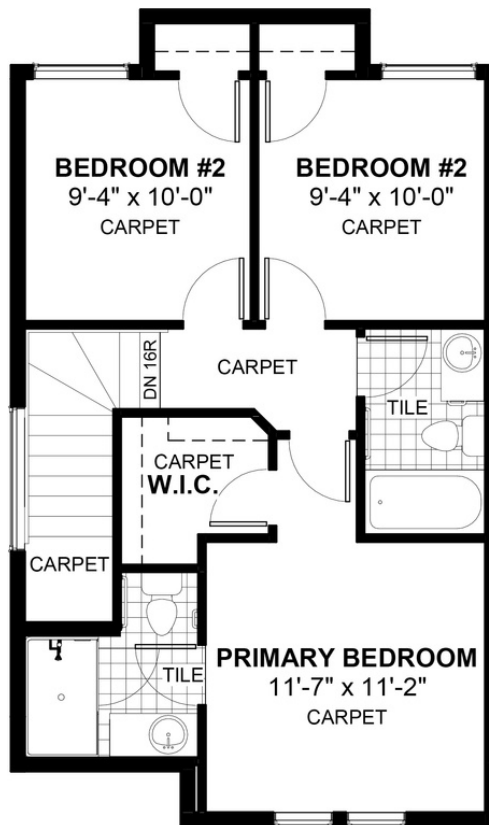
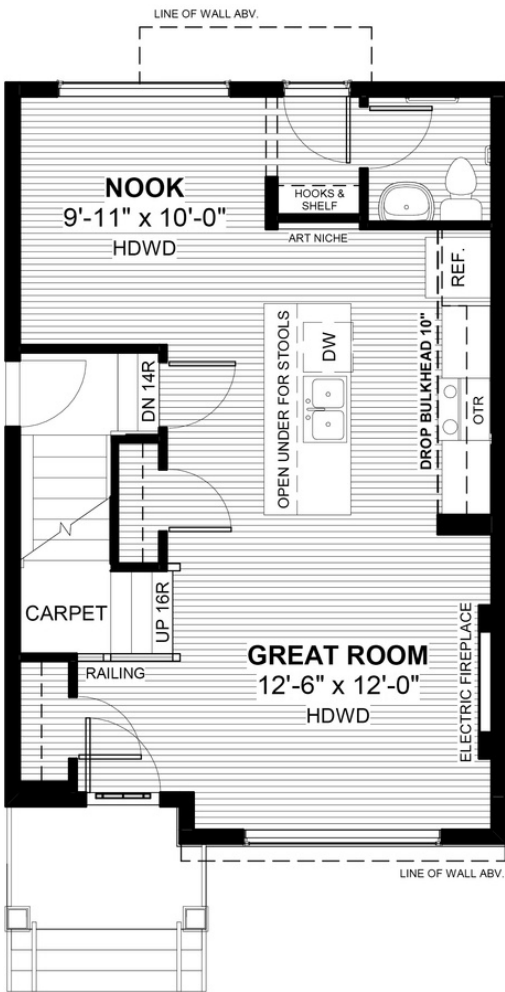


## FEATURES

- ✓ Basement Side Entry
- ✓ Rear Parking Pad
- ✓ Built-In Shelf & Hooks
- ✓ 9' Main Floor Ceiling
- ✓ Quartz Countertops
- ✓ Electric Fireplace
- ✓ Eng. Hardwood Floors
- ✓ Large Kitchen Island



## NOTES



\*Price includes lot&gst. Price, features & plan are subject to change at any time. All plans/designs are the exclusive property of Douglas Homes Ltd.