

PELICAN BAY

917 Cobblemore Common SW • Cobblestone Creek, Airdrie

 1,600 sq ft

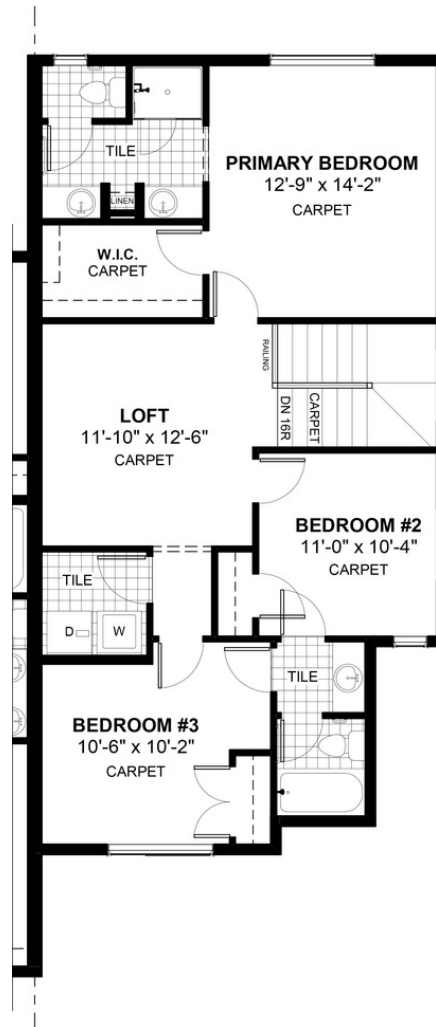
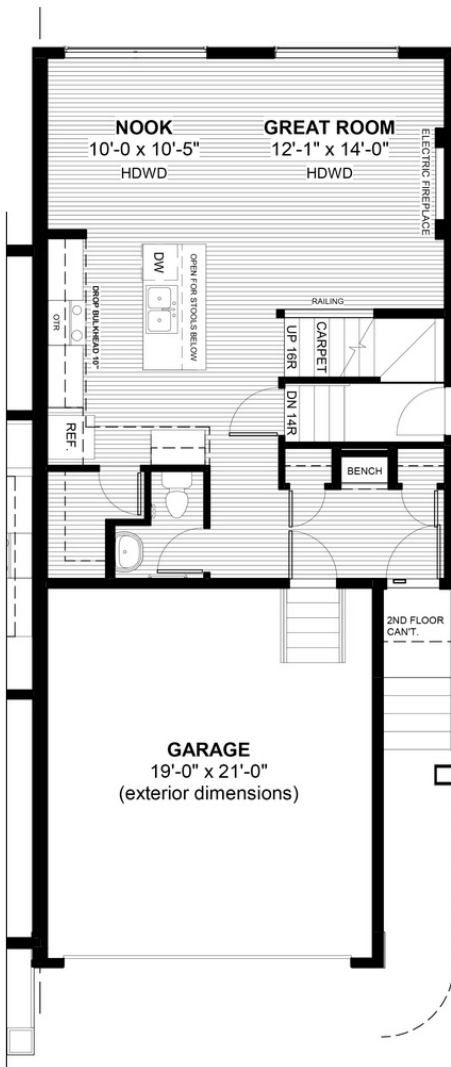
 3 bedrooms

 2.5 bathrooms



FEATURES

- ✓ Duplex (Right Unit)
- ✓ Double Car Garage
- ✓ Basement Side Entry
- ✓ Upper Floor Loft
- ✓ Built-In Bench to Entry
- ✓ 9' Main Floor Ceiling
- ✓ Quartz Countertops
- ✓ Electric Fireplace
- ✓ Double Vanities to Ensuite
- ✓ Upper Floor Laundry
- ✓ Tile to Baths/Laundry



NOTES



*Price includes lot&gst. Price, features & plan are subject to change at any time. All plans/designs are the exclusive property of Douglas Homes Ltd.