


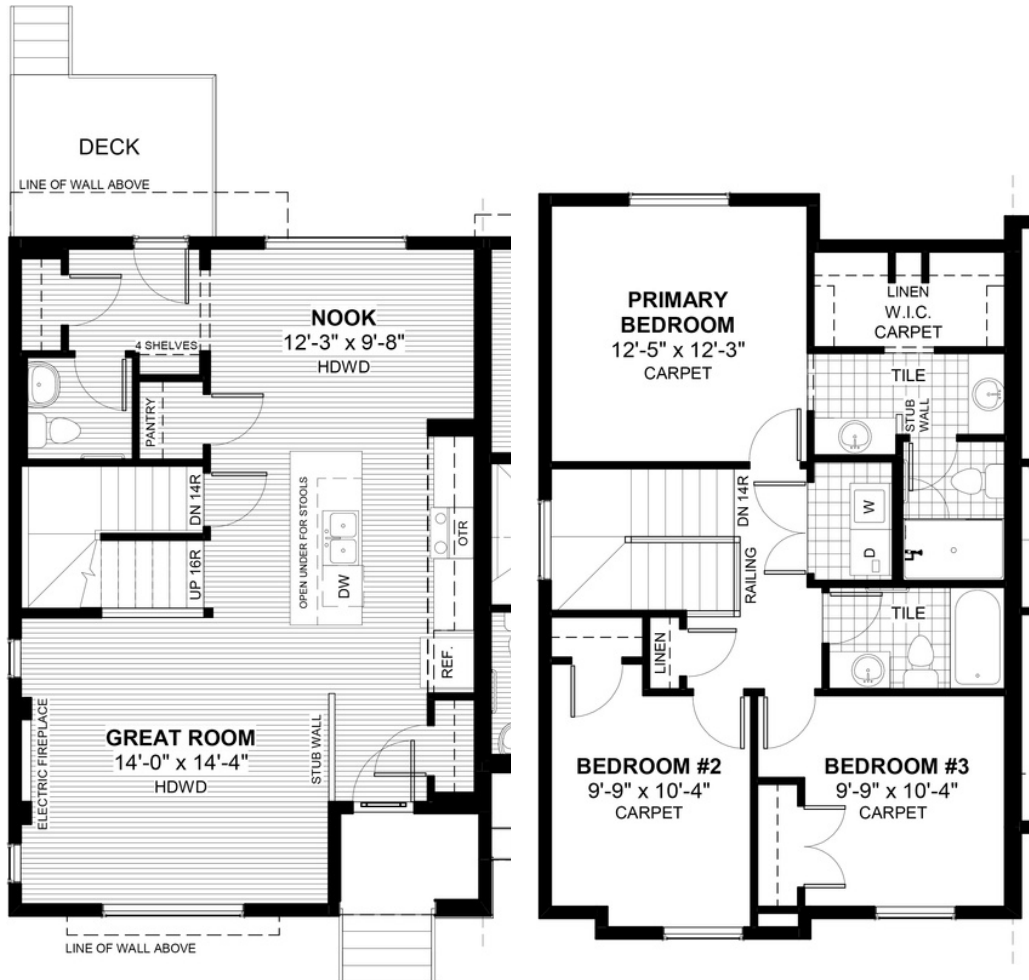
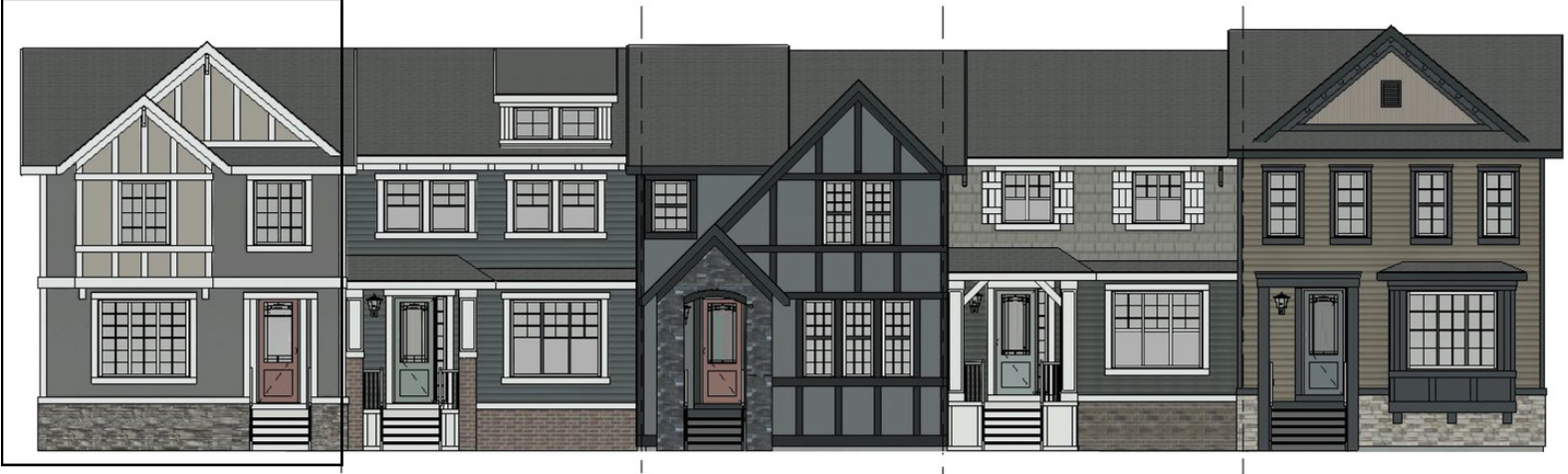
# RAWSON

237 Waterford Blvd • Waterford, Chestermere

 1464 sq ft

 3 bedrooms

 2.5 bathrooms



## FEATURES

- ✓ Townhouse, No Condo Fees
- ✓ End Unit
- ✓ Detached Double Car Garage
- ✓ Landscaping & Fencing
- ✓ Undeveloped Basement
- ✓ 9' Main Floor Ceiling
- ✓ Treated Wood Deck
- ✓ Quartz Countertops
- ✓ Eng. Hardwood Floors
- ✓ Wrought Iron Railings
- ✓ Electric Fireplace



\*Price includes lot&gst. Price, features & plan are subject to change at any time. All plans/designs are the exclusive property of Douglas Homes Ltd.