

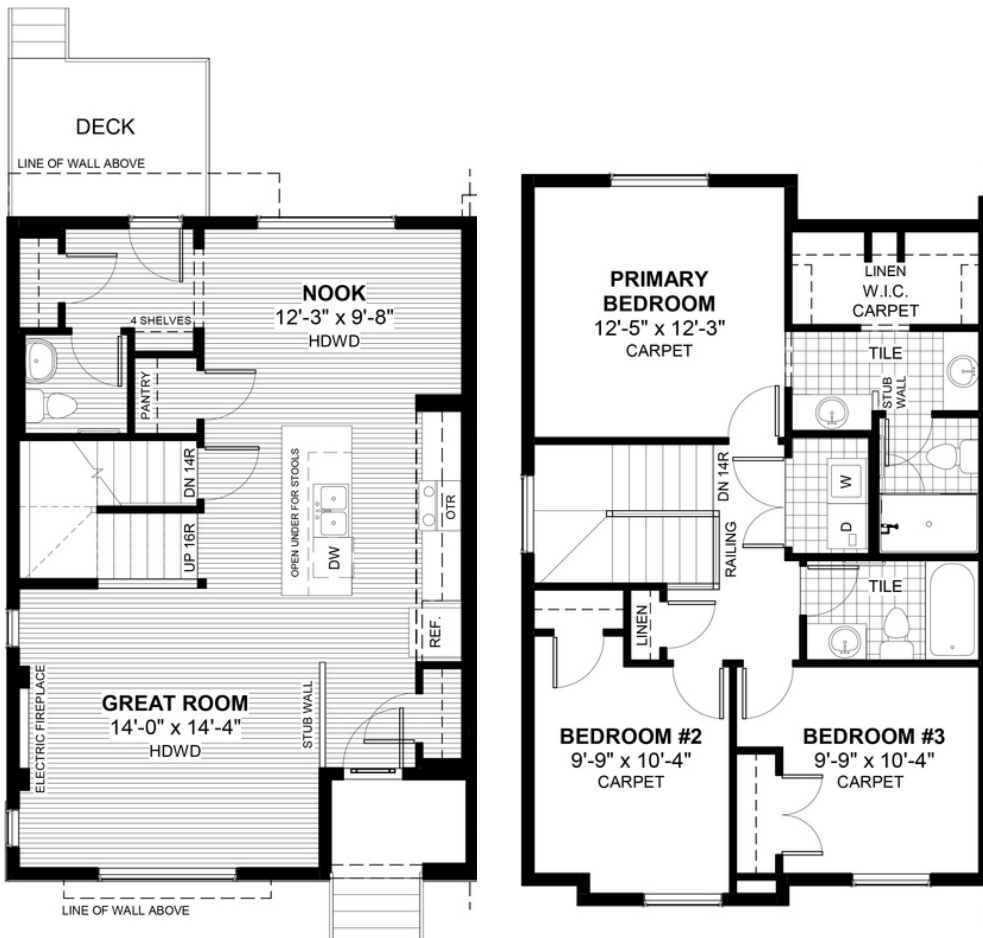
RAWSON

Q 1464 sq ft



An architectural elevation drawing showing five distinct residential house styles side-by-side. From left to right: 1. A Tudor-style house with a steep gable, half-timbering, a large multi-paned window, and a stone foundation. 2. A Colonial-style house with a side-gabled roof, a central dormer, and symmetrical windows. 3. A Tudor-style house with a steep gable, half-timbering, a stone chimney, and a red door. 4. A Colonial-style house with a side-gabled roof, a small front porch, and a brick foundation. 5. A Colonial-style house with a side-gabled roof, a small front porch, a bay window, and a stone foundation. The drawing uses a color palette of greys, browns, and blues, with black outlines for architectural details.

- ✓ Townhouse, No Condo Fees
- ✓ End Unit
- ✓ Detached Double Car Garage
- ✓ Landscaping & Fencing
- ✓ Undeveloped Basement
- ✓ 9' Main Floor Ceiling
- ✓ Treated Wood Deck
- ✓ Quartz Countertops
- ✓ Eng. Hardwood Floors
- ✓ Wrought Iron Railings
- ✓ Electric Fireplace



DOUGLAS HOMES
— PERFECT FIT —

www.douglashomes.net | waterford@douglashomes.net | 587.391.7812