


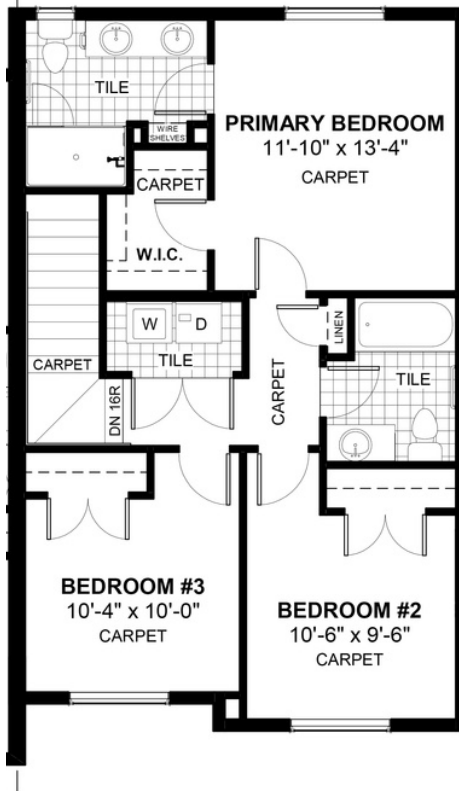
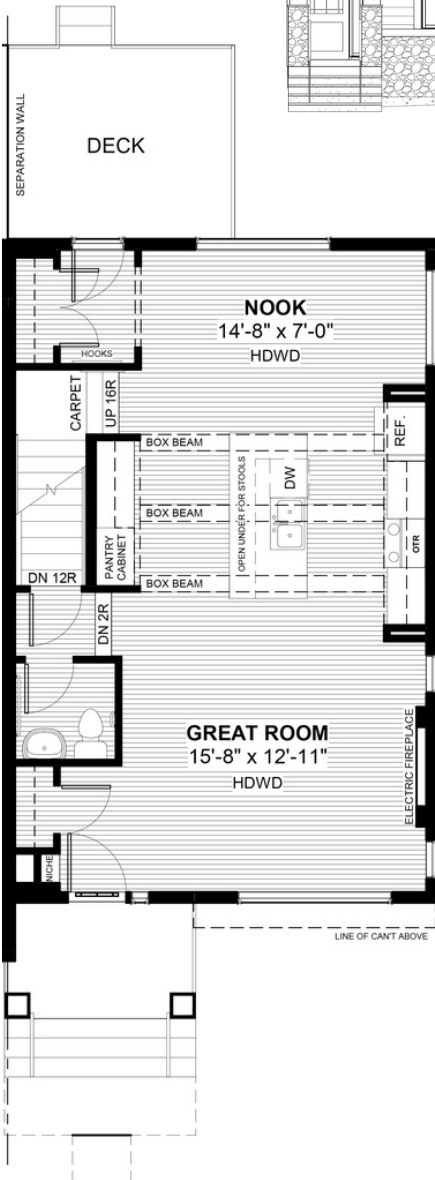
ALBANY

195 Waterford Heights • Waterford, Chestermere

 1,466 sq ft

 3 bedrooms

 2.5 bathrooms



FEATURES

- ★ **Corner Lot**
- ★ Rear Garage
- ✓ Duplex (Right Unit)
- ✓ Treated Wood Deck
- ✓ 9' Main Floor Ceiling
- ✓ Quartz Countertops
- ✓ Electric Fireplace
- ✓ Eng. Hardwood Main Floor
- ✓ Double Sinks to Ensuite
- ✓ Upper Floor Laundry



NOTES



*Price includes lot&gst. Price, features & plan are subject to change at any time. All plans/designs are the exclusive property of Douglas Homes Ltd.