


# MELBOURNE

191 Waterford Heights • Waterford, Chestermere

 1289 sq ft

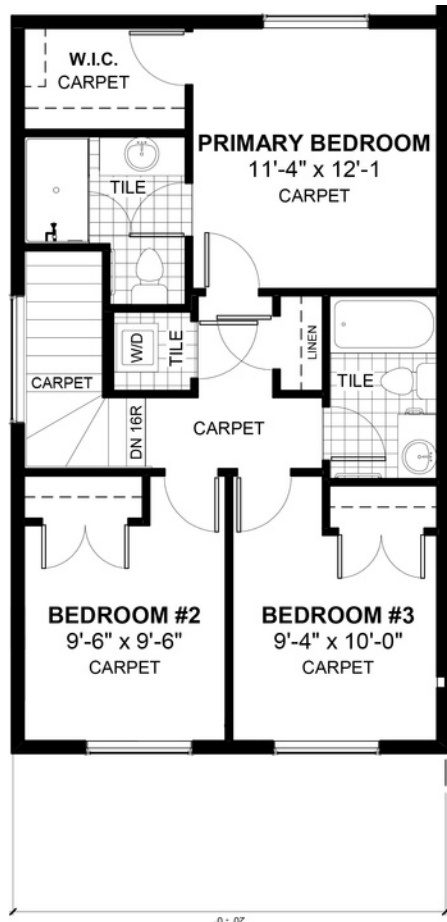
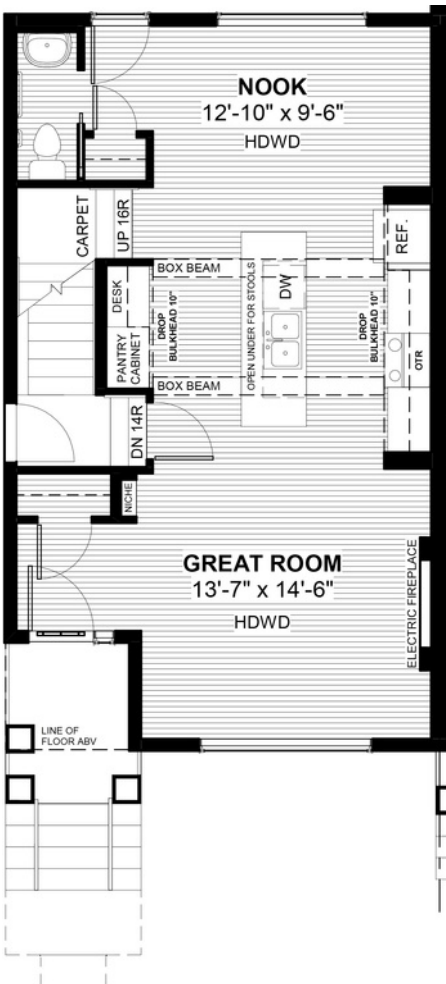
 3 bedrooms

 2.5 bathrooms



## FEATURES

- ✓ Duplex (Left Unit)
- ✓ Rear Parking Pad
- ✓ Basement Side Entry
- ✓ 9' Main Floor Ceiling
- ✓ Quartz Countertops
- ✓ Electric Fireplace
- ✓ Eng. Hardwood Main
- ✓ Tile Baths/Laundry
- ✓ Upper Floor Laundry
- ✓ Built-In Desk



## NOTES



\*Price includes lot&gst. Price, features & plan are subject to change at any time. All plans/designs are the exclusive property of Douglas Homes Ltd.