


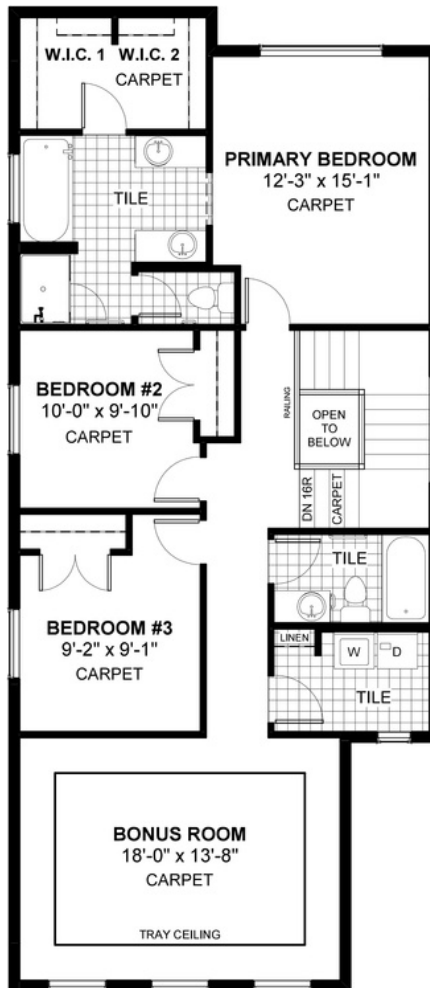
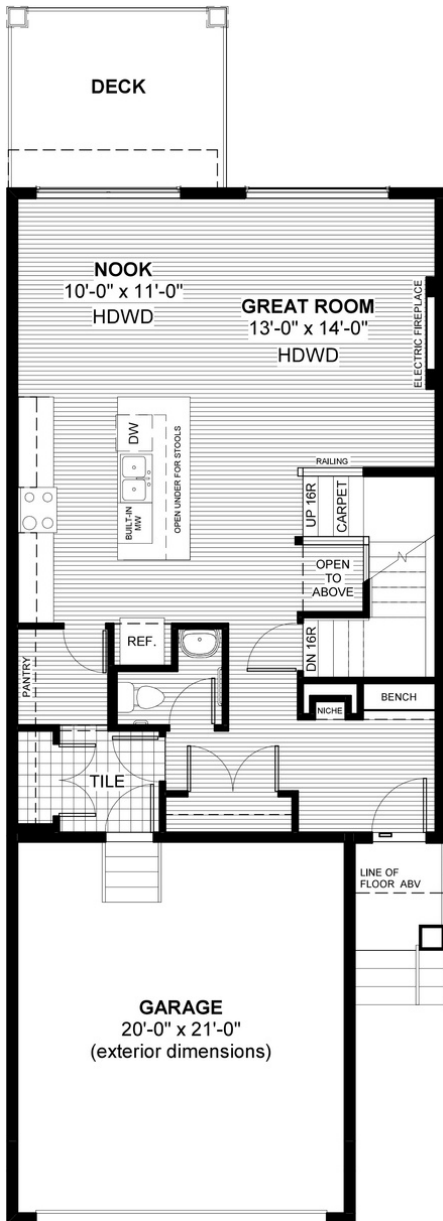
# SILVERTON

288 Precedence View • Precedence, Cochrane

 2004 sq ft

 3 bedrooms

 2.5 bathrooms



## FEATURES

- ★ **9' Walk-Out Basement**
- ✓ Bonus Room with Tray Ceiling
- ✓ Built-In Bench to Entry
- ✓ Quartz Countertops
- ✓ Electric Fireplace
- ✓ Eng. Hardwood Main Floor
- ✓ Rear Treated Wood Deck
- ✓ Wrought Iron Railings
- ✓ Upper Floor Laundry
- ✓ Double Vanities to Ensuite
- ✓ Tile to Baths/Laundry



## NOTES



\*Price includes lot&gst. Price, features & plan are subject to change at any time. All plans/designs are the exclusive property of Douglas Homes Ltd.