


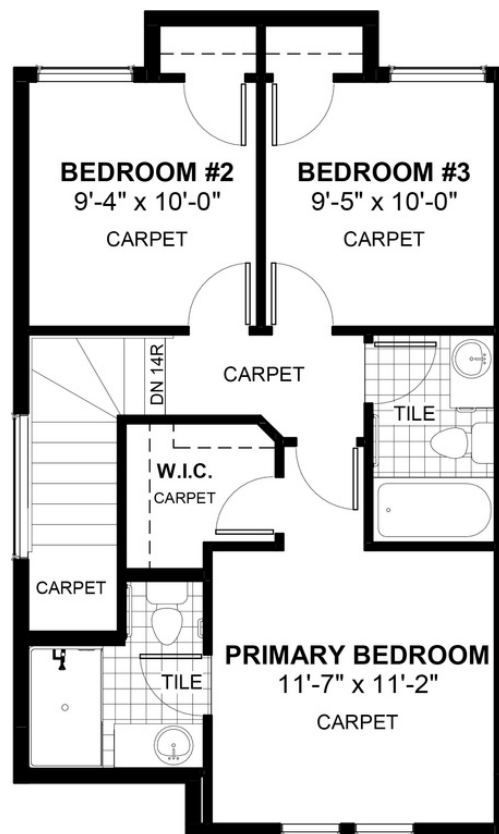
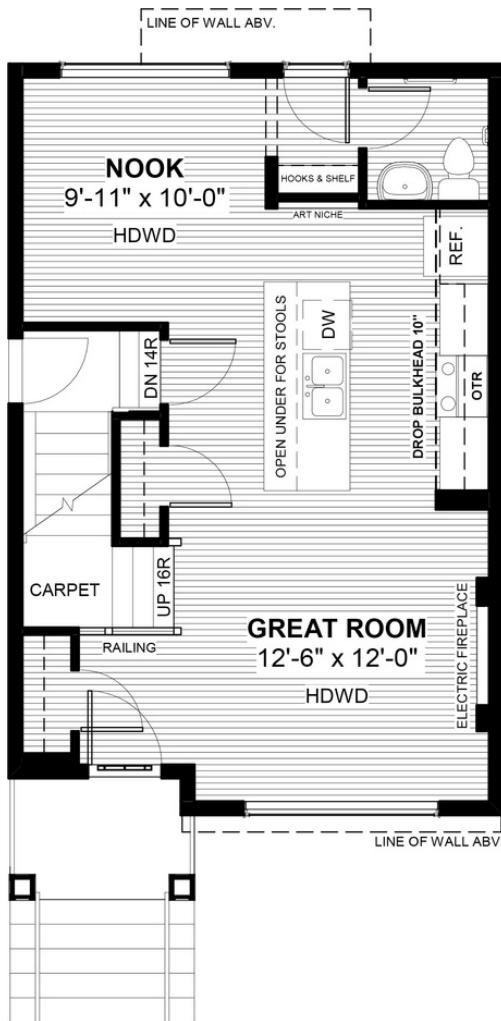
GLACIER

156 Waterford Heath • Waterford, Chestermere

 1180 sq ft

 3 bedrooms

 2.5 bathrooms



FEATURES

- ✓ Basement Side Entry
- ✓ Rear Parking Pad
- ✓ Built-In Hooks & Shelf
- ✓ 9' Main Floor Ceiling
- ✓ Quartz Countertops
- ✓ Electric Fireplace
- ✓ Eng. Hardwood Floors
- ✓ Large Kitchen Island



NOTES



*Price includes lot&gst. Price, features & plan are subject to change at any time. All plans/designs are the exclusive property of Douglas Homes Ltd.

www.douglashomes.net | waterford@douglashomes.net | 403.992.1950