


MELBOURNE

90 Granite Avenue • Greystone, Cochrane

 1,287 sq ft

 3 bedrooms

 2.5 bathrooms

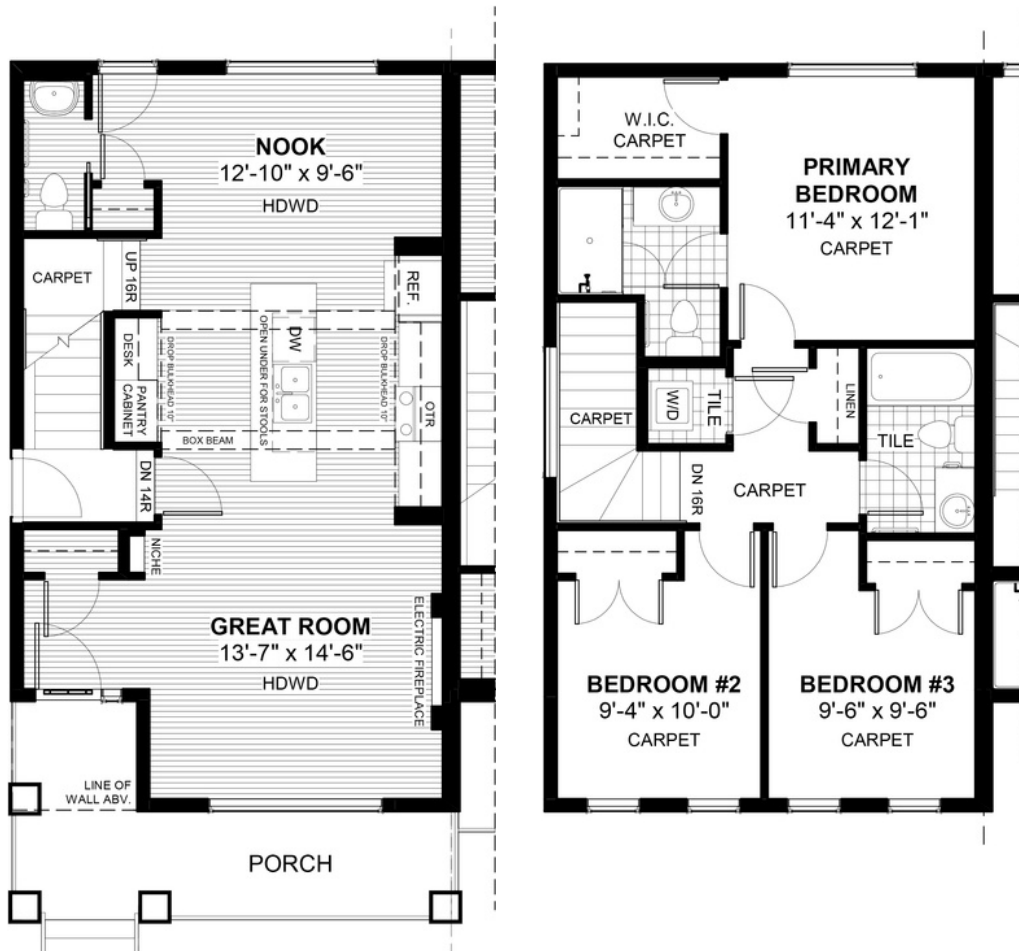


FEATURES

- ✓ Duplex (Left Unit)
- ✓ Basement Side Entry
- ✓ Rear Parking Pad
- ✓ Full Width Porch
- ✓ 9' Main Floor Ceiling
- ✓ Quartz Countertops
- ✓ Electric Fireplace
- ✓ Eng. Hardwood Main Floor
- ✓ Tile Baths/Laundry
- ✓ Upper Floor Laundry
- ✓ Built-In Desk



NOTES



*Price includes lot&gst. Price, features & plan are subject to change at any time. All plans/designs are the exclusive property of Douglas Homes Ltd.

www.douglashomes.net | greystone@douglashomes.net | 403.828.4599