


WATERTON

28 Mill Road • Greystone, Cochrane

 1698 sq ft

 3 bedrooms

 2.5 bathrooms

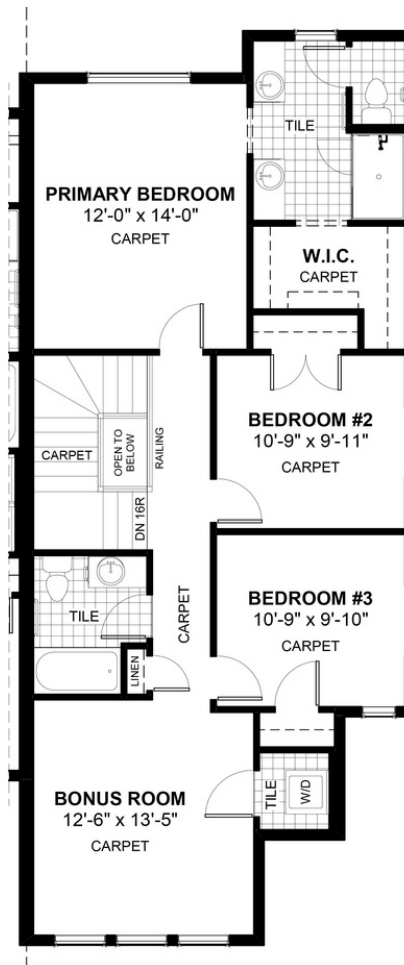
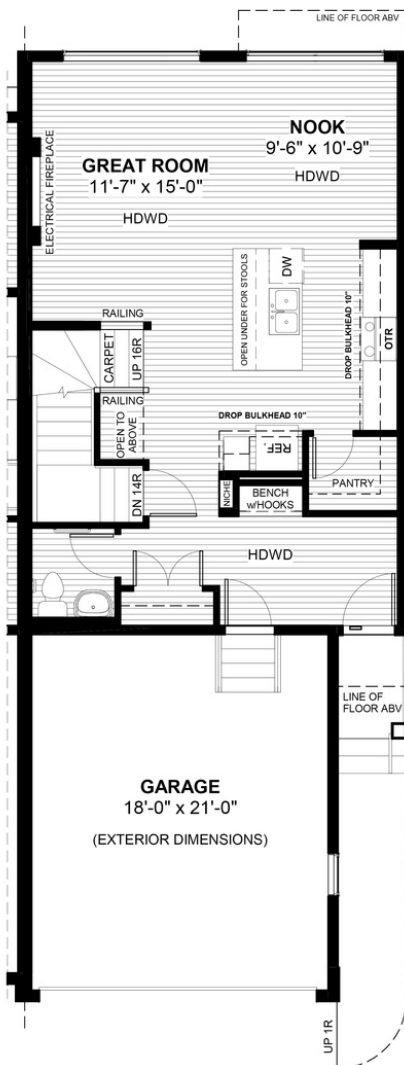


FEATURES

- ✓ Duplex (Right Unit)
- ✓ Bonus Room
- ✓ 9' Main Floor Ceiling
- ✓ Quartz Countertops
- ✓ Electric Fireplace
- ✓ Eng. Hardwood Main Floor
- ✓ Upper Floor Laundry
- ✓ Double Vanities to Ensuite
- ✓ Tile to Baths/Laundry
- ✓ Built-In Bench + Hooks



NOTES



DOUGLAS HOMES
— PERFECT FIT —

*Price includes lot&gst. Price, features & plan are subject to change at any time. All plans/designs are the exclusive property of Douglas Homes Ltd.

www.douglashomes.net | greystone@douglashomes.net | 403.828.4599