


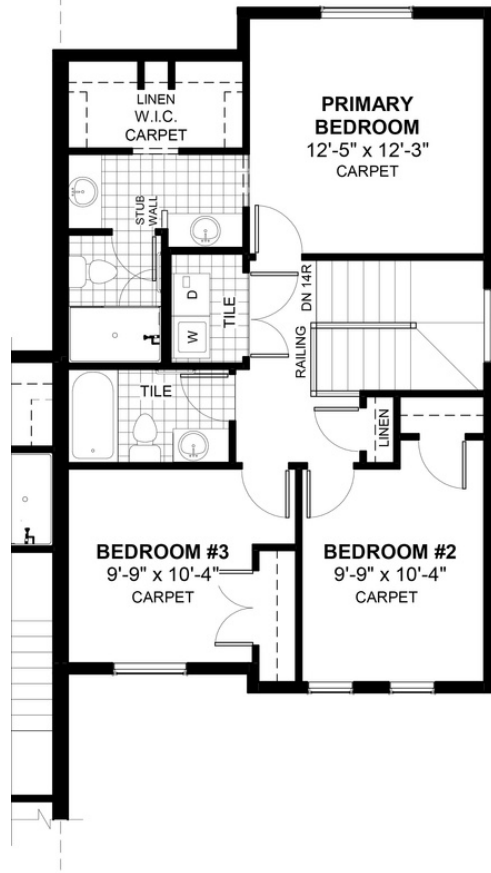
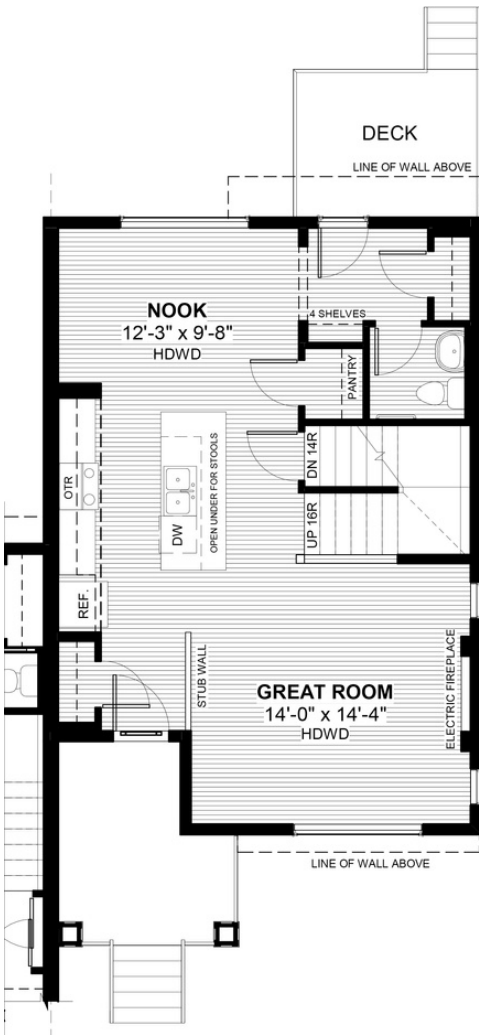
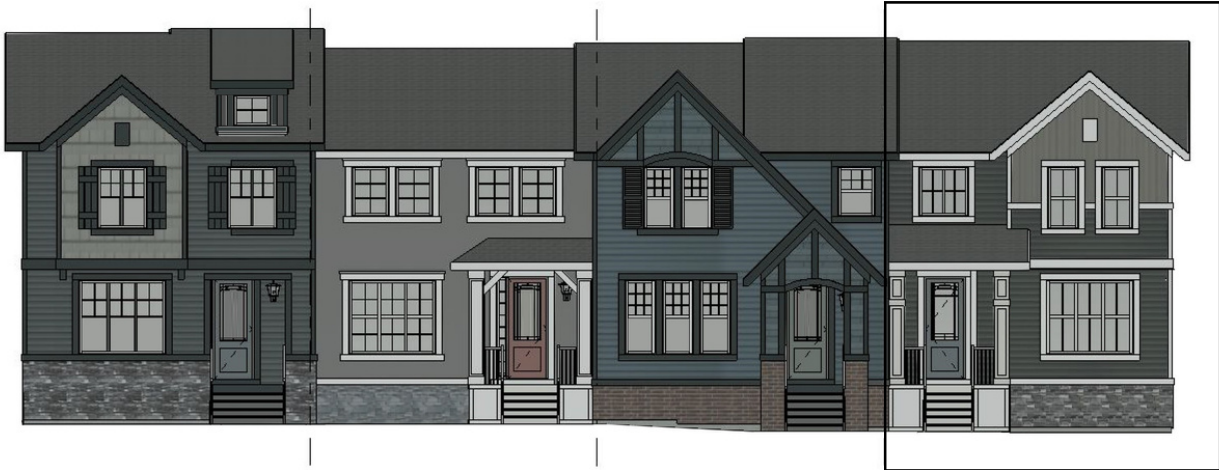
# RAWSON

309 Waterford Blvd • Waterford, Chestermere

 1478 sq ft

 3 bedrooms

 2.5 bathrooms



## FEATURES

-  Corner Lot
-  Townhouse - End Unit
-  No Condo Fees
-  Detached Double Car Garage
-  Landscaping & Fencing
-  9' Main Floor Ceiling
-  Rear Treated Wood Deck
-  Quartz Countertops
-  Eng. Hardwood Floors
-  Wrought Iron Railings
-  Electric Fireplace



\*Price includes lot&gst. Price, features & plan are subject to change at any time. All plans/designs are the exclusive property of Douglas Homes Ltd.