



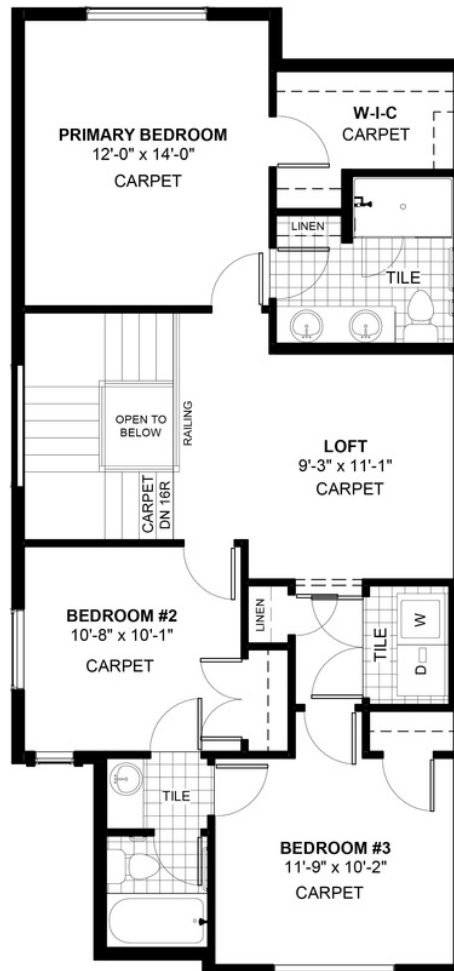
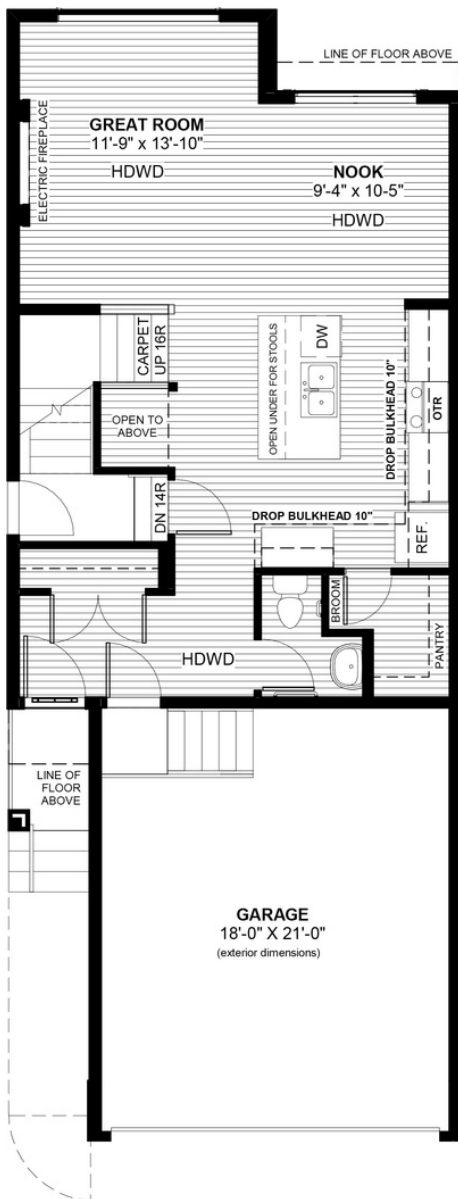
FAIRMONT

35 Precedence Green • Precedence, Cochrane

 1602 sq ft

 3 bedrooms

 2.5 bathrooms



FEATURES

- ✓ Basement Side Entry
- ✓ 9' Main Floor Ceiling
- ✓ Upper Floor Loft
- ✓ Quartz Countertops
- ✓ Electric Fireplace
- ✓ Eng. Hardwood Floors
- ✓ Wrought Iron Railing
- ✓ Upper Floor Laundry
- ✓ Tile to Baths/Laundry
- ✓ Double Sinks to Ensuite



NOTES



*Price includes lot&gst. Price, features & plan are subject to change at any time. All plans/designs are the exclusive property of Douglas Homes Ltd.

www.douglashomes.net | precedence@douglashomes.net | 587.391.7815