

the Glendale

2224
sq.ft.



4 bedrooms



2.5 bathrooms



24' wide



NOTES:



DOUGLAS HOMES

REMARKABLE WITHIN REACH

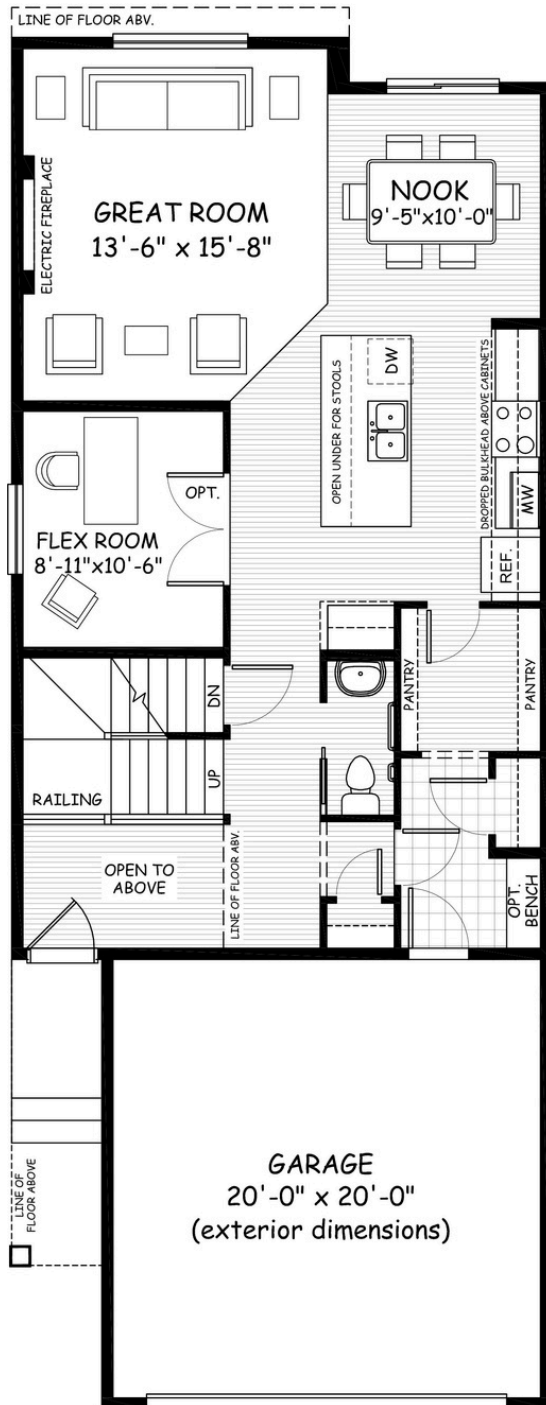
Artists's representation, may not be exactly as shown - all dimensions are approximate. All plans/designs are the exclusive property of Douglas Homes Ltd. Prices are subject to change without notice.

www.douglashomes.net |  @douglashomesltd

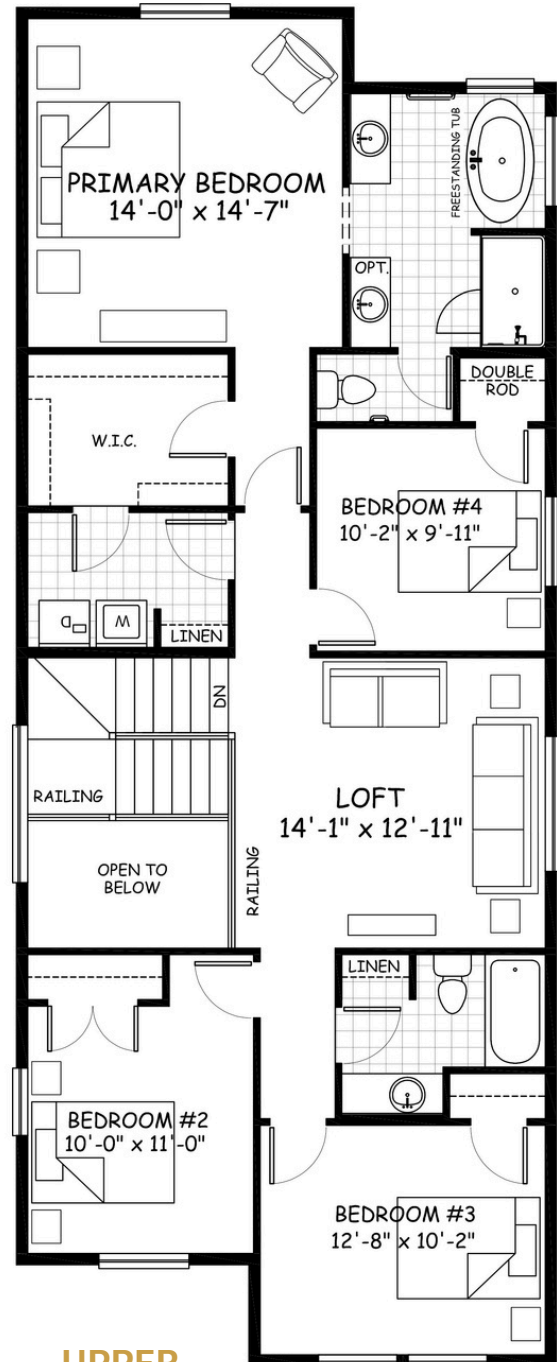
the Glendale

2224 sq.ft.

24' wide
62'-3" long



MAIN
966 sq.ft.



UPPER
1258 sq.ft.

September 2023. Artists's representation, may not be exactly as shown and all dimensions are approximate.
All plans/designs are the exclusive property of Douglas Homes Ltd. Prices are subject to change without notice.

DH
DOUGLAS HOMES
REMARKABLE WITHIN REACH

www.douglashomes.net | @douglashomesltd