


MORaine

296 Waterford Blvd • Waterford, Chestermere

 1383 sq ft

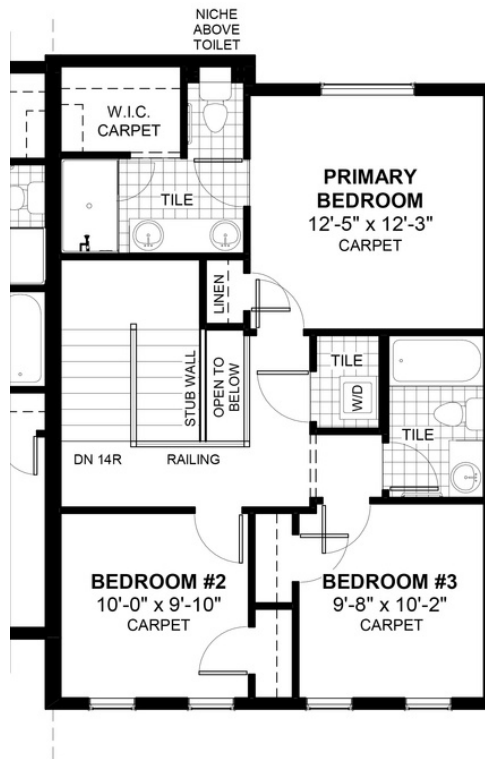
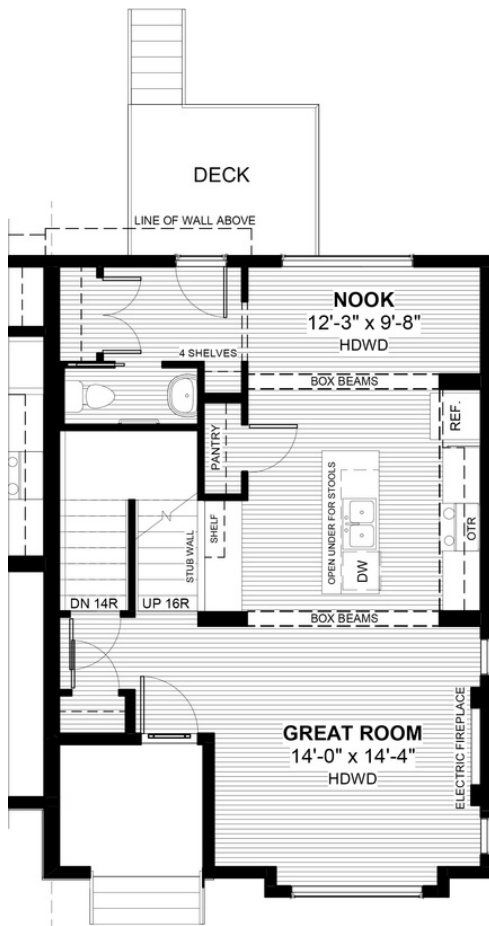
 3 bedrooms

 2.5 bathrooms



FEATURES

- ✓ Townhouse - End Unit
- ✓ No Condo Fees
- ✓ Detached Double Car Garage
- ✓ Landscaping & Fencing
- ✓ Electric Fireplace
- ✓ 9' Main Floor Ceiling
- ✓ Rear Treated Wood Deck
- ✓ Quartz Countertops
- ✓ Eng. Hardwood Floors
- ✓ Wrought Iron Railings



DH
DOUGLAS HOMES
— PERFECT FIT —

*Price includes lot&gst. Price, features & plan are subject to change at any time. All plans/designs are the exclusive property of Douglas Homes Ltd.

www.douglashomes.net | waterford@douglashomes.net | 587.391.7812