

QUICK POSSESSION

MORaine

304 Waterford Blvd • Waterford, Chestermere



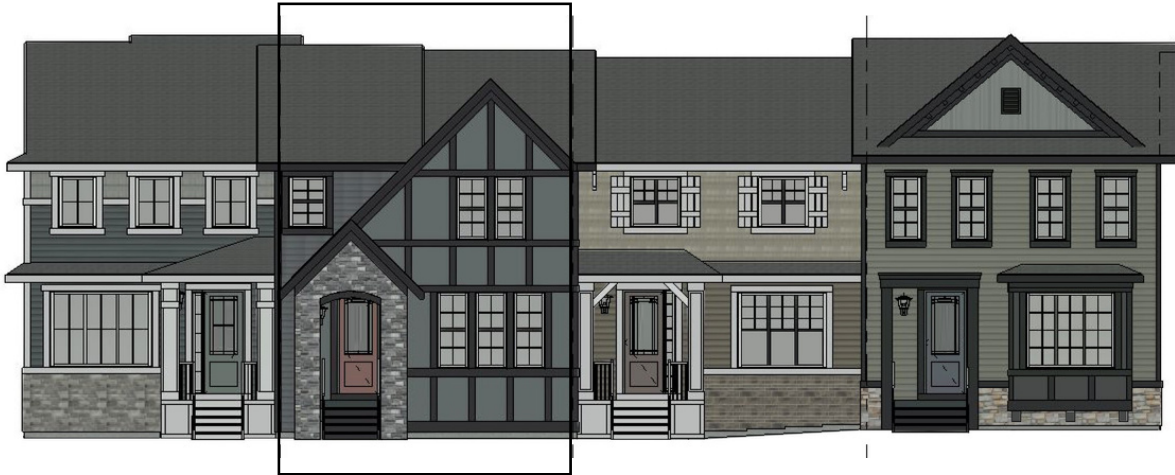
1378 sq ft



3 bedrooms

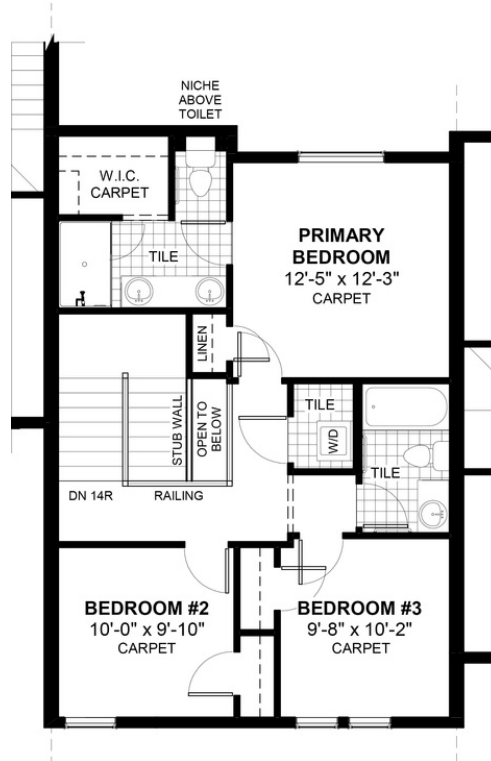
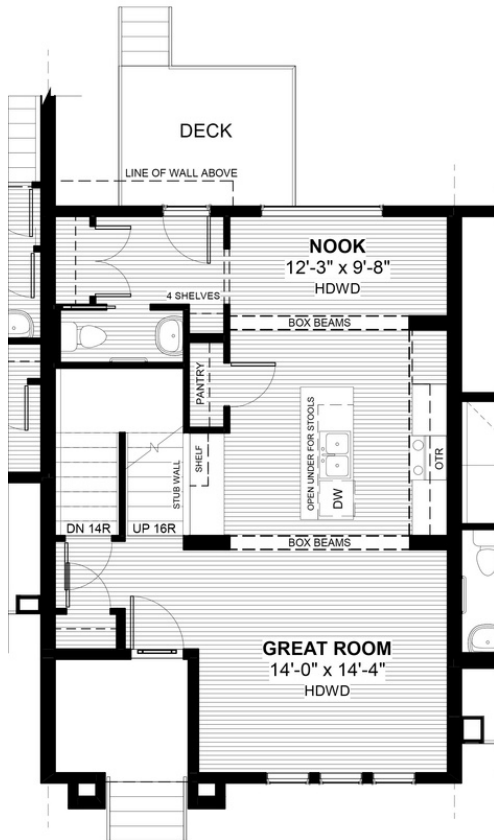


2.5 bathrooms



FEATURES

- ✓ Townhouse
- ✓ No Condo Fees
- ✓ Detached Double Car Garage
- ✓ Rear Treated Wood Deck
- ✓ Landscaping & Fencing
- ✓ 9' Main Floor Ceiling
- ✓ Quartz Countertops
- ✓ Eng. Hardwood Floors
- ✓ Wrought Iron Railings
- ✓ Upper Floor Laundry



DOUGLAS HOMES
— PERFECT FIT —

*Price includes lot&gst. Price, features & plan are subject to change at any time. All plans/designs are the exclusive property of Douglas Homes Ltd.

www.douglashomes.net | waterford@douglashomes.net | 587.391.7812