

ASHTON

43 Precedence Green • Precedence, Cochrane



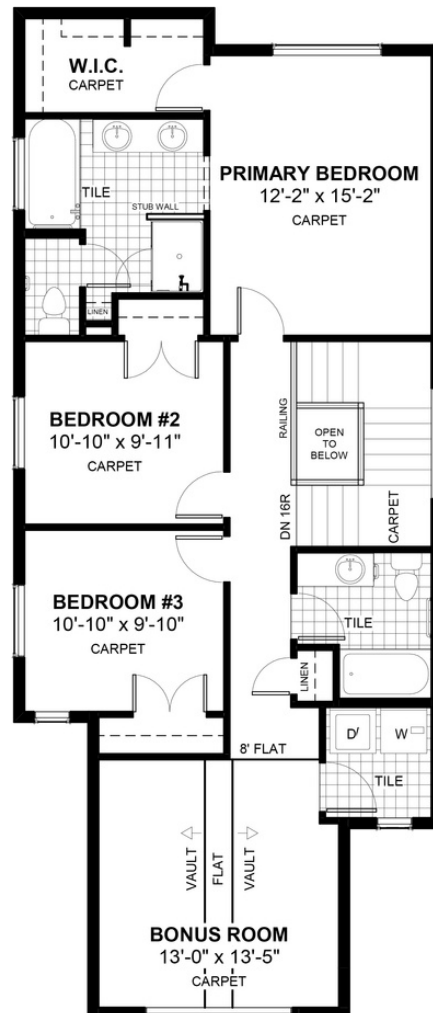
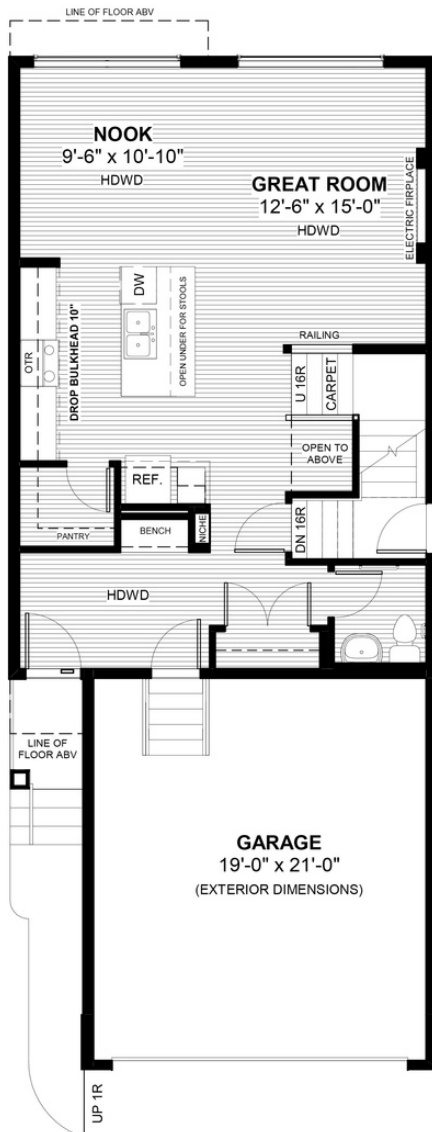
1804 sq ft



3 bedrooms



2.5 bathrooms



FEATURES

- ★ **9' Walk-Out Basement**
- ✓ Basement Side Entry
- ✓ Vaulted Bonus Room
- ✓ 9' Main Floor Ceiling
- ✓ Quartz Countertops
- ✓ Electric Fireplace
- ✓ Eng. Hardwood Floors
- ✓ Double Sinks to Ensuite
- ✓ Built-In Bench to Entry
- ✓ Wrought Iron Railings



NOTES



*Price includes lot&gst. Price, features & plan are subject to change at any time. All plans/designs are the exclusive property of Douglas Homes Ltd.

www.douglashomes.net | precedence@douglashomes.net | 403.828.4599