



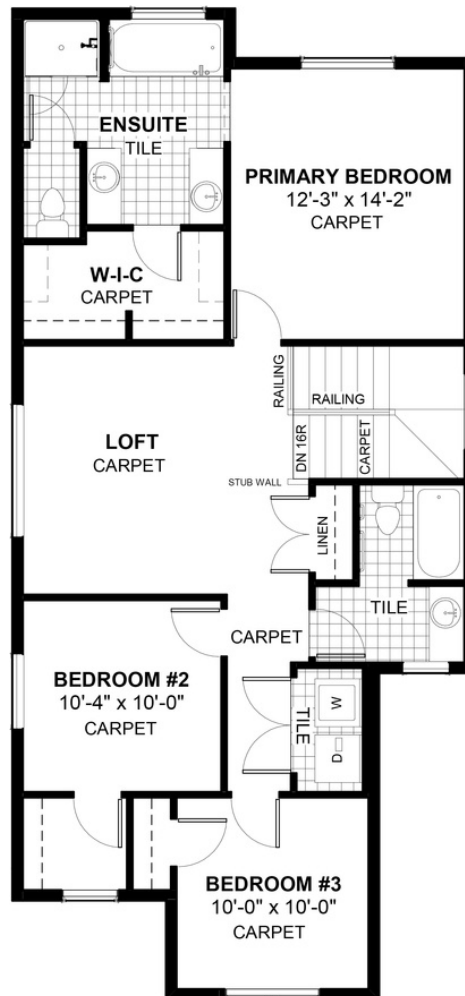
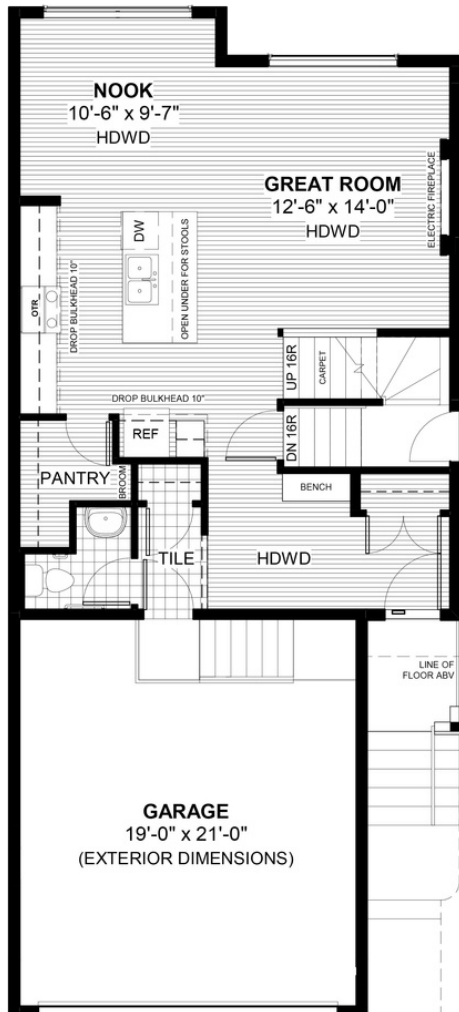
# MADISON 2

52 Precedence View • Precedence, Cochrane

 1,768 sq ft

 3 bedrooms

 2.5 bathrooms



## FEATURES

- ✓ Basement Side Entry
- ✓ Upper Floor Loft
- ✓ 9' Main Floor Ceiling
- ✓ Quartz Countertops
- ✓ Electric Fireplace
- ✓ Wrought Iron Railing
- ✓ Built-In Bench to Entry
- ✓ Eng. Hardwood Floors
- ✓ Tile to Baths/Laundry
- ✓ Double Vanities to Ensuite



## NOTES

**DH**  
DOUGLAS HOMES  
— PERFECT FIT —

\*Price includes lot&gst. Price, features & plan are subject to change at any time. All plans/designs are the exclusive property of Douglas Homes Ltd.

www.douglashomes.net | precedence@douglashomes.net | 403.828.4599