

# SIERRA VISTA

447 Crimson Ridge Place NW • Crimson Ridge, Calgary



2076 sq ft



3 bedrooms



2.5 bathrooms

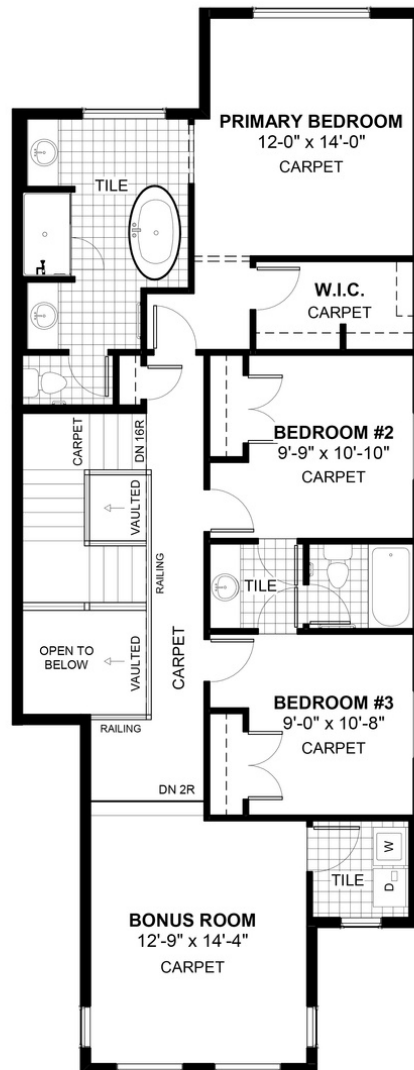
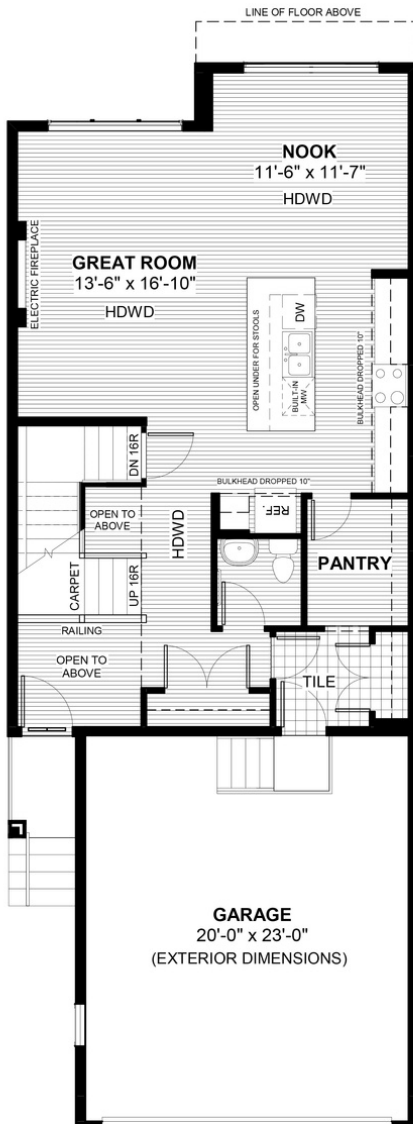


## FEATURES

- ✓ Extended Garage Length
- ✓ Upper Floor Bonus Room
- ✓ 9' Main Floor Ceiling
- ✓ Walk-Through Pantry
- ✓ 2 Storey Vaulted Foyer
- ✓ Quartz Countertops
- ✓ Electric Fireplace
- ✓ Eng. Hardwood Main Floor
- ✓ Double Vanities to Ensuite
- ✓ Upper Floor Laundry
- ✓ Mudroom off the Garage
- ✓ Wrought Iron Railings



## NOTES



DOUGLAS HOMES  
— PERFECT FIT —

\*Price includes lot&gst. Price, features & plan are subject to change at any time. All plans/designs are the exclusive property of Douglas Homes Ltd.

www.douglashomes.net | crimsonridge@douglashomes.net | 587.355.2505