

ST. ANDREWS

35 Lambeau Lane • Lanark Landing, Airdrie



1292 sq ft



3 bedrooms



2.5 bathrooms

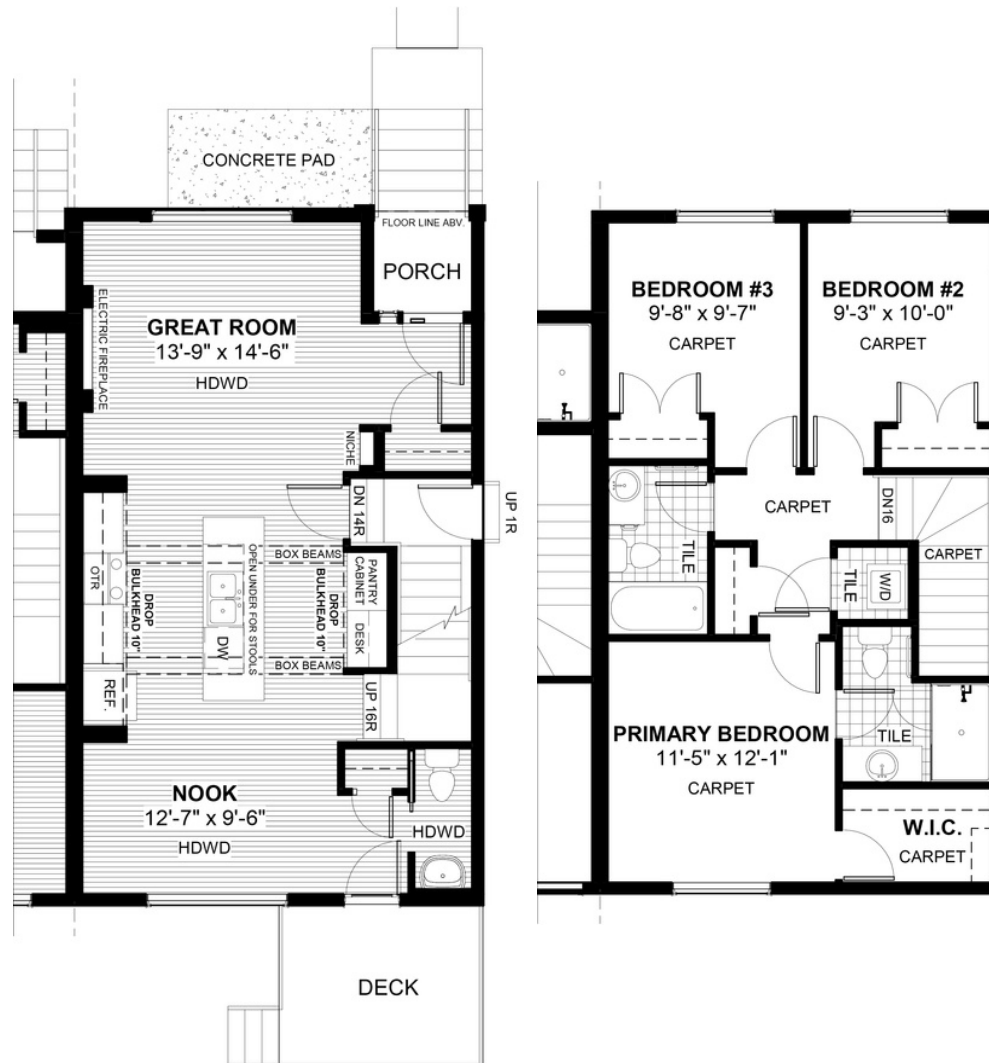


FEATURES

- ✓ Triplex (Left Unit)
- ✓ No Condo Fees
- ✓ Detached Double Car Garage
- ✓ Basement Side Entry
- ✓ Front Concrete Pad
- ✓ Full Landscaping to Front/Back
- ✓ 9' Main Floor Ceiling
- ✓ Rear Treated Wood Deck
- ✓ Quartz Countertops
- ✓ Eng. Hardwood Floors
- ✓ Upper Floor Laundry
- ✓ Electric Fireplace
- ✓ Built-In Desk



NOTES



DH
DOUGLAS HOMES
— PERFECT FIT —

*Price includes lot&gst. Price, features & plan are subject to change at any time. All plans/designs are the exclusive property of Douglas Homes Ltd.

www.douglashomes.net | lanark@douglashomes.net | 403.818.9218