

TROON

31 Lambeau Lane • Lanark Landing, Airdrie



1183 sq ft



3 bedrooms



2.5 bathrooms

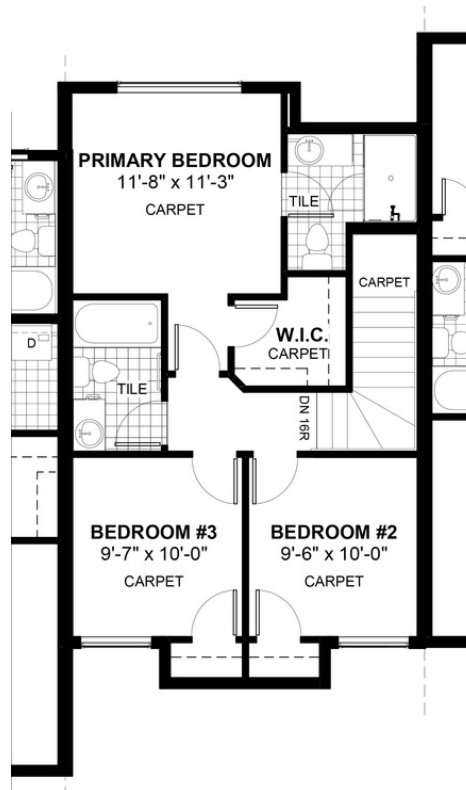
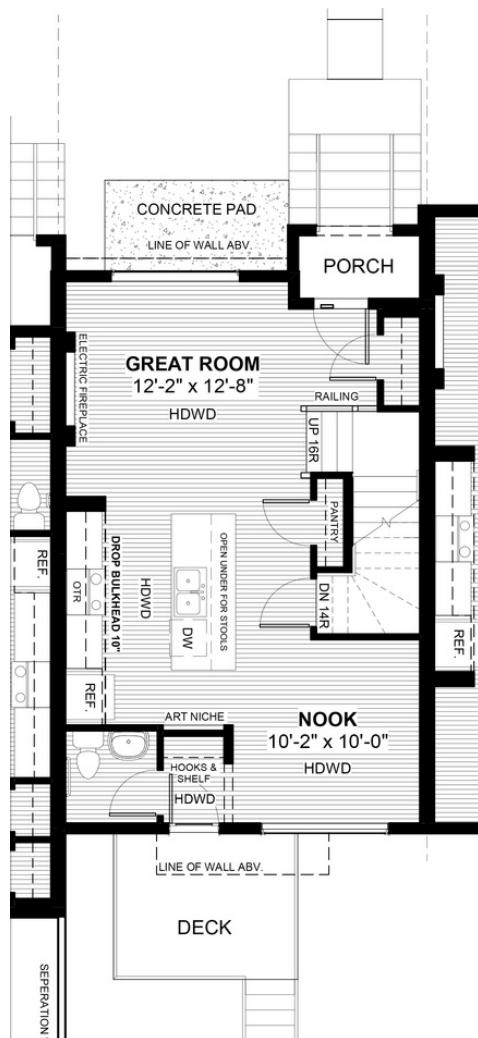


FEATURES

- ✓ Triplex (Middle Unit)
- ✓ No Condo Fees
- ✓ Detached Double Car Garage
- ✓ Front Concrete Pad
- ✓ Full Landscaping to Front/Back
- ✓ 9' Main Floor Ceiling
- ✓ Rear Treated Wood Deck
- ✓ Quartz Countertops
- ✓ Eng. Hardwood Floors
- ✓ Built-In Hooks & Shelf
- ✓ Wrought Iron Railings
- ✓ Electric Fireplace
- ✓ Pantry



NOTES



*Price includes lot&gst. Price, features & plan are subject to change at any time. All plans/designs are the exclusive property of Douglas Homes Ltd.

www.douglashomes.net | lanark@douglashomes.net | 403.818.9218