



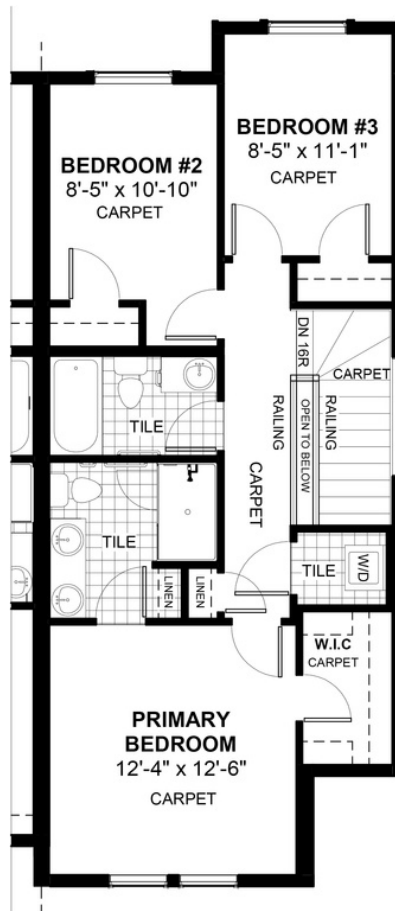
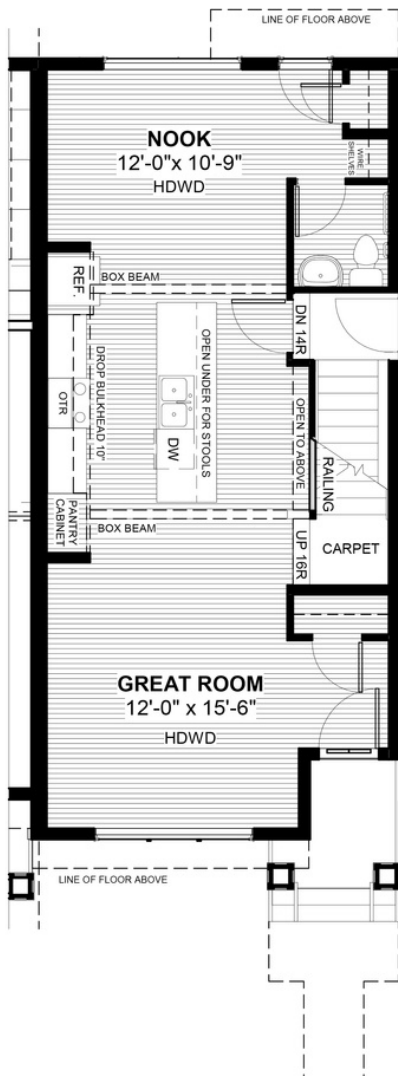
ADELAIDE

391 Sora Boulevard SE • Sora, Calgary

 1,360 sq ft

 3 bedrooms

 2.5 bathrooms



FEATURES

- ✓ Duplex (Right Unit)
- ✓ Basement Side Entry
- ✓ Rear Parking Pad
- ✓ 9' Main Floor Ceiling
- ✓ Quartz Countertops
- ✓ Upper Floor Laundry
- ✓ Eng. Hardwood Main
- ✓ Wrought Iron Railing
- ✓ Tile Baths and Laundry
- ✓ Wire Shelves at Rear



NOTES

DH
DOUGLAS HOMES
— PERFECT FIT —

*Price includes lot&gst. Price, features & plan are subject to change at any time. All plans/designs are the exclusive property of Douglas Homes Ltd.

www.douglashomes.net | sora@douglashomes.net | 403.818.9218