

BOW

7 Waterford Manor • Waterford, Chestermere



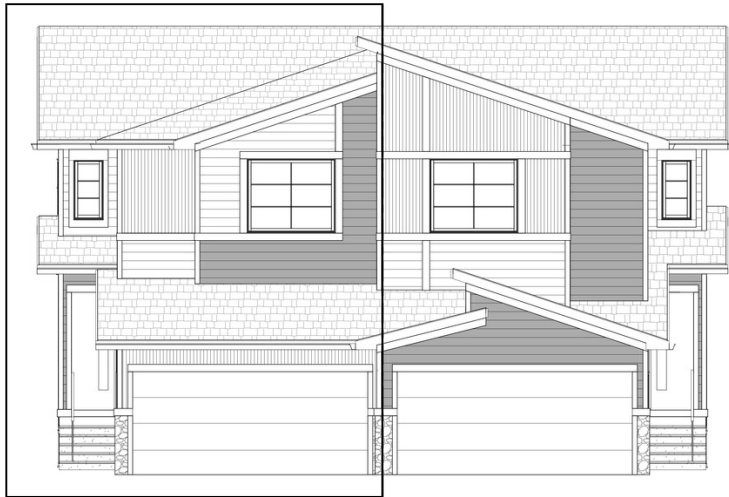
1600 sq ft



3 bedrooms



2.5 bathrooms

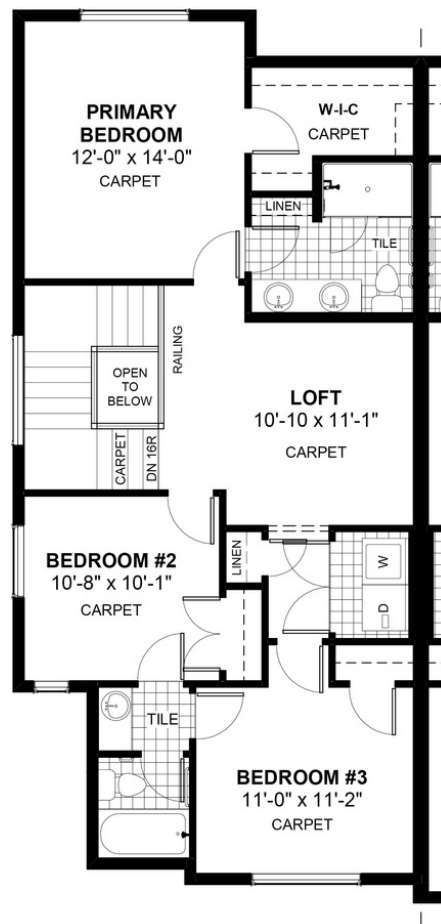
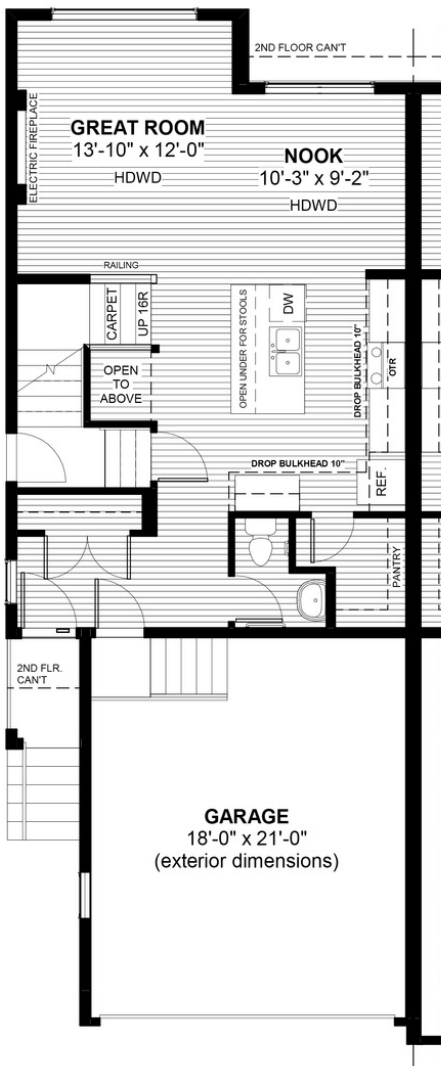


FEATURES

- ✓ Duplex (Left Unit)
- ✓ Basement Side Entry
- ✓ 9' Main Floor Ceiling
- ✓ Quartz Countertops
- ✓ Electric Fireplace
- ✓ Eng. Hardwood Floors
- ✓ Wrought Iron Railings
- ✓ Upper Floor Loft
- ✓ Double sinks to Ensuite
- ✓ Upper Floor Laundry



NOTES



*Price includes lot&gst. Price, features & plan are subject to change at any time. All plans/designs are the exclusive property of Douglas Homes Ltd.