


CANBERRA

256 Langwell Common SE • Lanark Landing, Airdrie

 1,490 sq ft

 3 bedrooms

 2.5 bathrooms

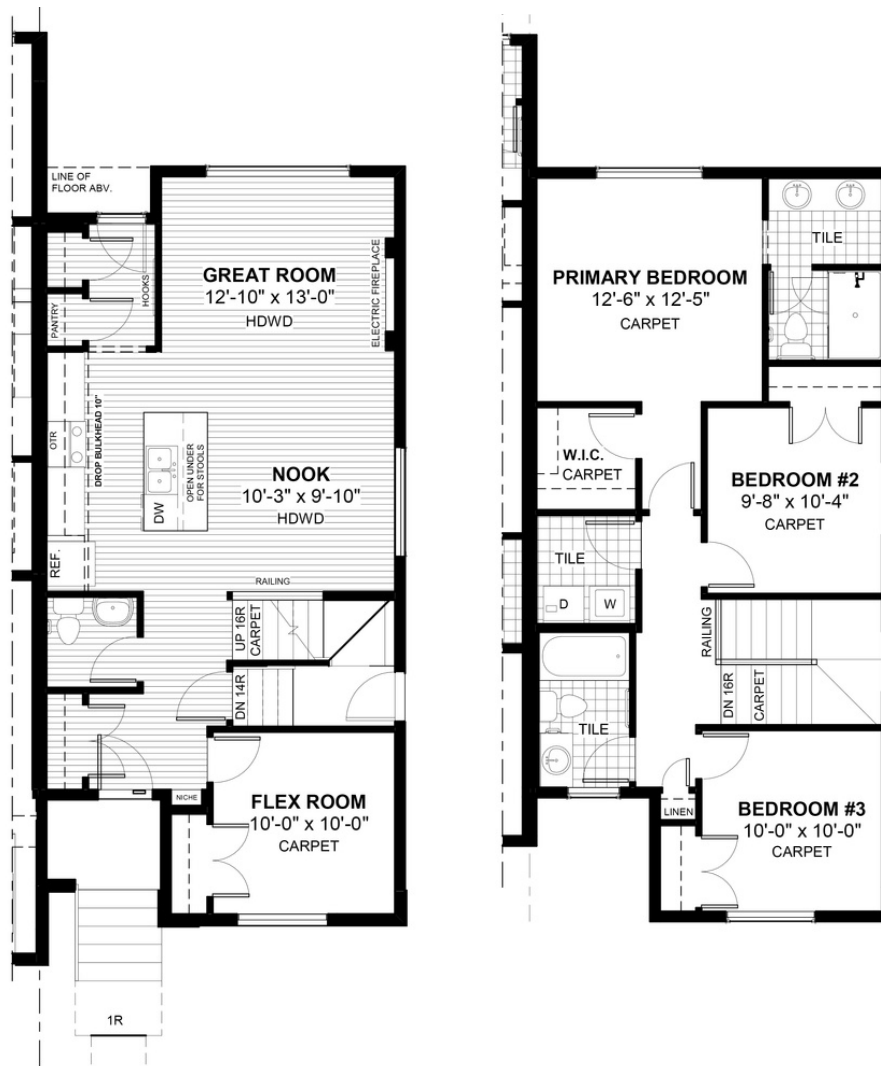


FEATURES

- ✓ Duplex (Right Unit)
- ✓ Basement Side Entry
- ✓ Rear Parking Pad
- ✓ Main Floor Flex Room
- ✓ 9' Main Floor Ceiling
- ✓ Quartz Countertops
- ✓ Electric Fireplace
- ✓ Eng. Hardwood Main Floor
- ✓ Tile Baths/Laundry
- ✓ Wrought Iron Railings
- ✓ Double Sinks to Ensuite



NOTES



DH
DOUGLAS HOMES
— PERFECT FIT —

*Price includes lot&gst. Price, features & plan are subject to change at any time. All plans/designs are the exclusive property of Douglas Homes Ltd.

www.douglashomes.net | lanark@douglashomes.net | 403.818.9218