


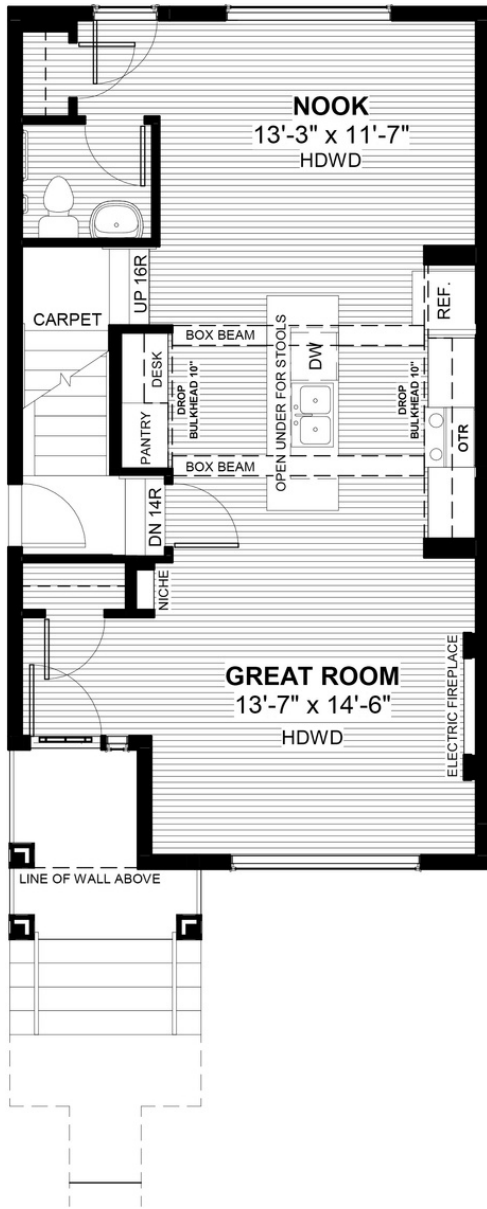
# FERNIE 2

200 Waterford Heath • Waterford, Chestermere

 1369 sq ft

 3 bedrooms

 2.5 bathrooms

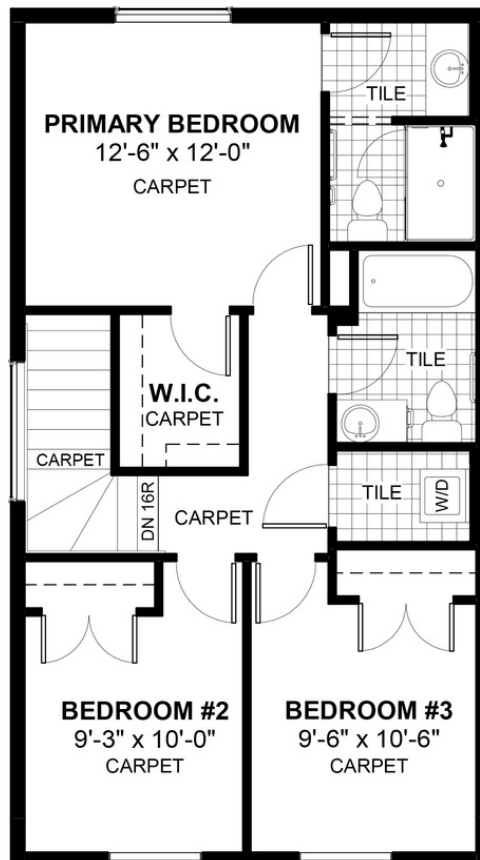


## FEATURES

- ✓ Basement Side Entry
- ✓ Rear Parking Pad
- ✓ 9' Main Floor Ceiling
- ✓ Quartz Countertops
- ✓ Electric Fireplace
- ✓ Eng. Hardwood Floors
- ✓ Upper Floor Laundry
- ✓ Built-in Desk
- ✓ Tile to Baths/Laundry
- ✓ Large Kitchen Island



## NOTES



**DH**  
DOUGLAS HOMES  
— PERFECT FIT —

\*Price includes lot&gst. Price, features & plan are subject to change at any time. All plans/designs are the exclusive property of Douglas Homes Ltd.

www.douglashomes.net | waterford@douglashomes.net | 587.391.7812