

GLENDALE

273 Crimson Ridge Place NW • Crimson Ridge, Calgary



2224 sq ft



4 bedrooms



2.5 bathrooms

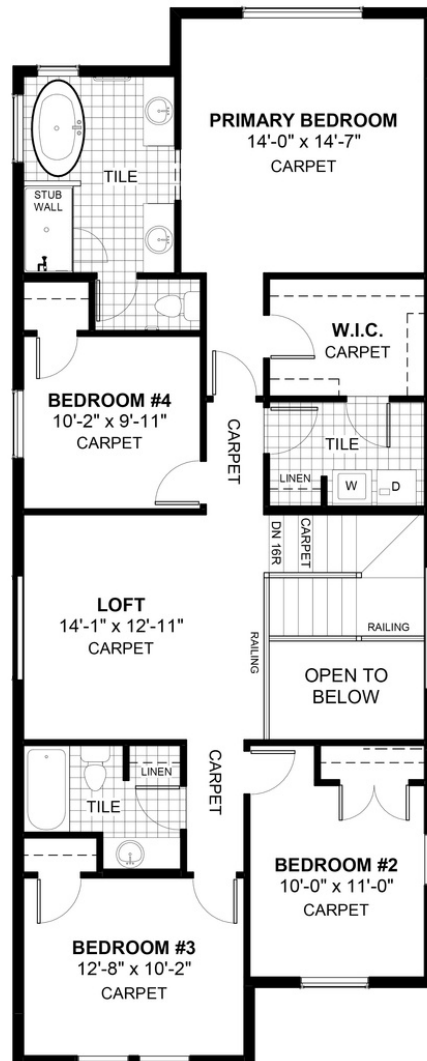
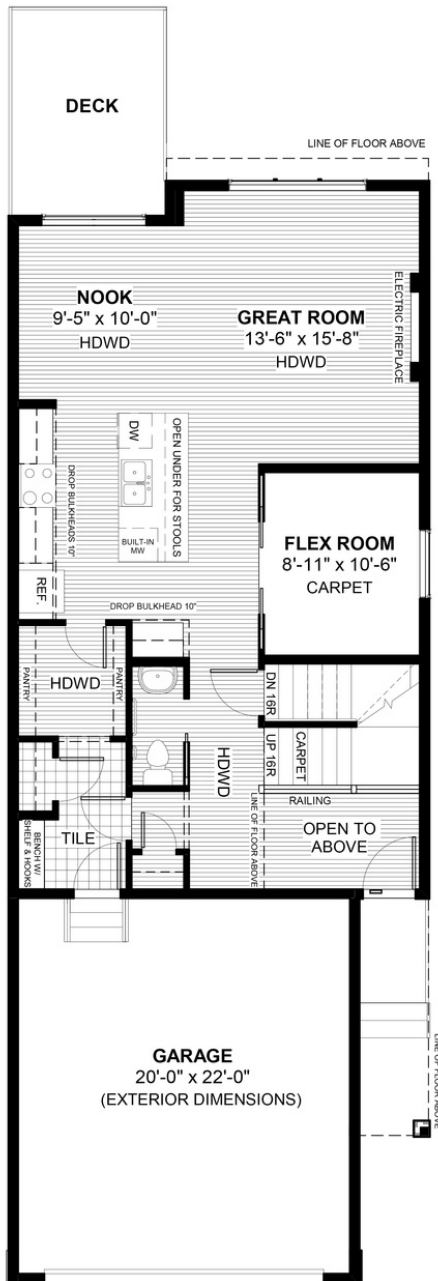


FEATURES

- ★ **9' Walk-Out Basement**
- ✓ Extended Garage Length
- ✓ Rear Treated Wood Deck
- ✓ Upper Floor Loft
- ✓ Main Floor Flex Room
- ✓ 2 Storey Foyer
- ✓ 9' Main Floor Ceiling
- ✓ Walk-Through Pantry
- ✓ Electric Fireplace
- ✓ Eng. Hardwood Floors
- ✓ Double Vanities to Ensuite



NOTES



*Price includes lot&gst. Price, features & plan are subject to change at any time. All plans/designs are the exclusive property of Douglas Homes Ltd.