



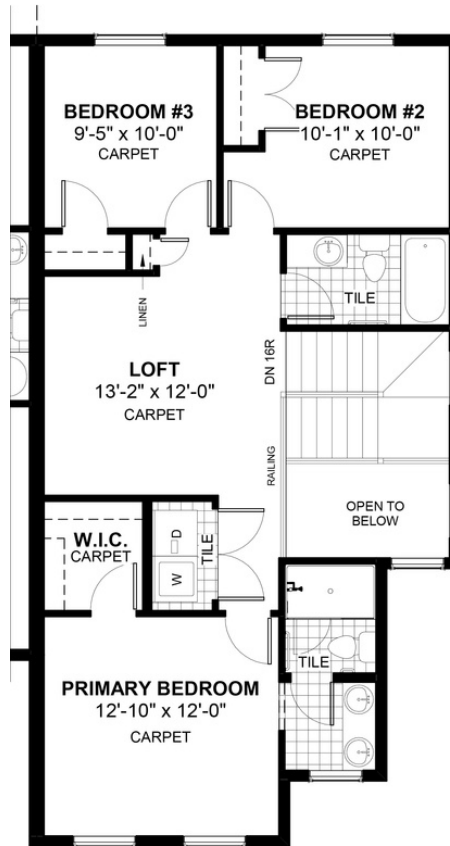
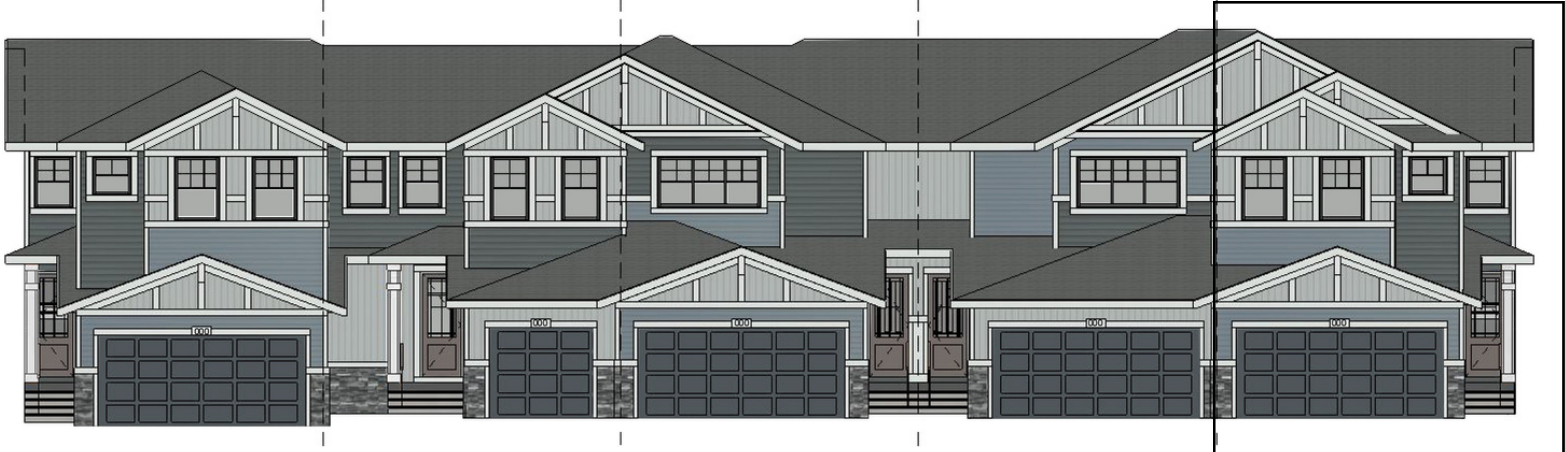
KENMARE 2

197 Waterford Heath • Waterford, Chestermere

 1496 sq ft

 3 bedrooms

 2.5 bathrooms



FEATURES

- ✓ Townhouse, End Unit
- ✓ No Condo Fees
- ✓ Attached Double Car Garage
- ✓ Upper Floor Loft
- ✓ 9' Main Floor Ceiling
- ✓ Treated Wood Deck
- ✓ Electric Fireplace
- ✓ Quartz Countertops
- ✓ Eng. Hardwood Floors
- ✓ Double Sink to Ensuite

DH
DOUGLAS HOMES
— PERFECT FIT —

*Price includes lot&gst. Price, features & plan are subject to change at any time. All plans/designs are the exclusive property of Douglas Homes Ltd.

www.douglashomes.net | waterford@douglashomes.net | 587.391.7812