

SILVERTON

106 Precedence View • Precedence, Cochrane



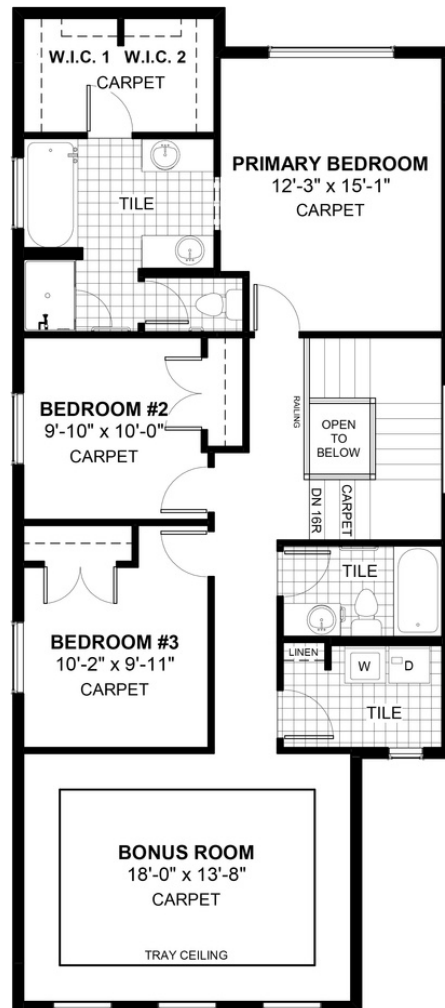
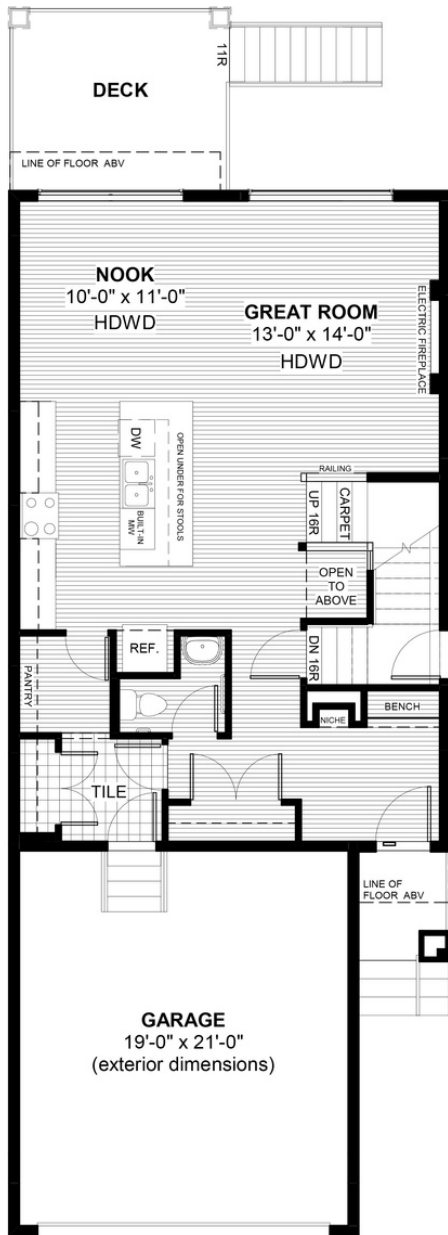
2004 sq ft



3 bedrooms



2.5 bathrooms



FEATURES

- ★ **9' Sunshine Basement**
- ✓ Basement Side Entry
- ✓ Bonus Room with Tray Ceiling
- ✓ Treated Wood Deck
- ✓ Built-In Bench to Entry
- ✓ Quartz Countertops
- ✓ Electric Fireplace
- ✓ Eng. Hardwood Main Floor
- ✓ Wrought Iron Railings
- ✓ Double Vanities to Ensuite
- ✓ Walk-through Pantry



NOTES



*Price includes lot&gst. Price, features & plan are subject to change at any time. All plans/designs are the exclusive property of Douglas Homes Ltd.